

Connecting cables NEBS, for sensors



Connecting cables NEBS, for sensors

Type codes

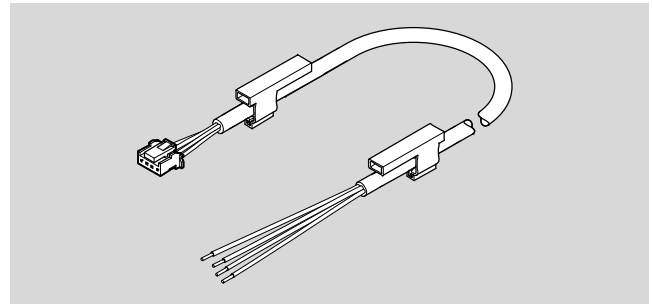
		NEBS	-	L1	G	4	-	C	-	2.5	-	LE	4
Function													
NEBS	Connecting cable												
Connection technology, left-hand end													
L1	Socket, rectangular design L1												
Socket design													
G	Straight												
Number of pins/wires (left-hand end)													
4	4-pin												
Cable characteristic													
C	Standard												
Cable length													
2.5	2.5 m												
5	5 m												
Connection technology, right-hand end													
LE	Open end												
Number of pins/wires (right-hand end)													
4	4-pin												

Connecting cables NEBS, for sensors

Technical data

Connecting cable NEBS-L1G4

- Connecting cable for connecting pressure sensors SPAB
- Pre-assembled at one end
- Cable lengths: 2.5 m and 5 m
- 4 wires
- Socket, rectangular design L1



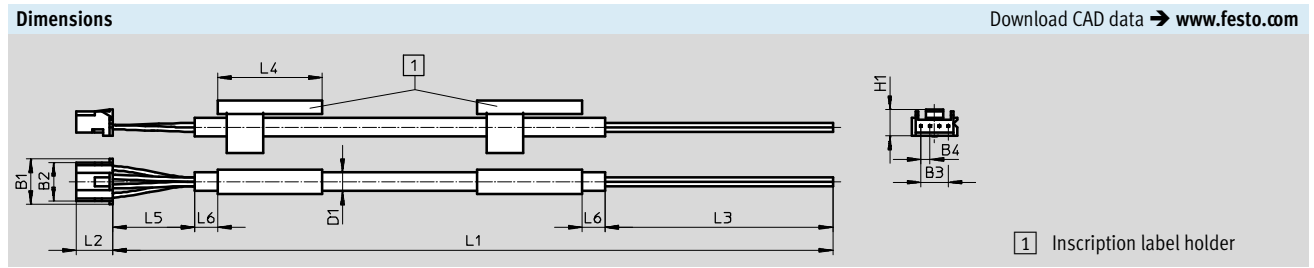
General technical data	
Electrical connection	Socket, square design L1, 4-pin Open end, 4-wire
Cable characteristic	Standard
Cable test conditions	Bending strength: according to Festo standard Test conditions on request
Cable composition	4 x 0.14 mm ²
Cable Ø [mm]	4.1
Conductor nominal cross section [mm ²]	0.14
Operating voltage range [V DC]	0 ... 30
Surge resistance [kV]	0.8
Acceptable current load at 40 °C [A]	1
Degree of protection to EN 60529	IP40

Materials	
Cable sheath colour	Grey
Colour wires	Blue, brown, black, white
Housing	PA
Cable sheath	PVC
Insulating sheath	PP
Note on materials	Free of copper and PTFE RoHS-compliant

Operating and environmental conditions	
Ambient temperature [°C]	-20 ... +60
Ambient temperature with flexible cable installation [°C]	-5 ... +60
Degree of contamination	2

Connecting cables NEBS, for sensors

Technical data



Type	B1	B2	B3	B4	D1 ∅	H1	L1 [m]	L2	L3	L4	L5	L6
NEBS-L1G4-K-2.5-LE4	10	8.4	6	2	4.1	5.8	2.5	8	50	23	15	≥ 5
NEBS-L1G4-K-5-LE4							5					

Ordering data

Electrical connection				Cable length [m]	Part No.	Type
Left-hand end		Right-hand end				
4-pin	Socket, rectangular design L1	4-wire	Open end	2.5	572576	NEBS-L1G4-K-2.5-LE4
				5	572577	NEBS-L1G4-K-5-LE4

Ordering data – Accessories

	Material	Usage	Size	Part No.	Type	PU ¹⁾
Inscription label						
	PCs	For insertion in the inscription label holder	23 x 4 mm	541598	ASLR-L-423	34

1) Packaging unit quantity per frame