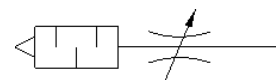
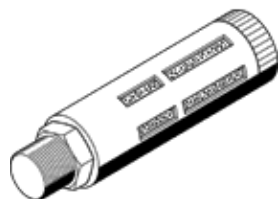


flow control/silencer GRU-1/8-B

Part number: 9516

FESTO

Flow control valve with integrated silencer for exhaust air flow control with certain designs of valves.



Data sheet

Feature	Value
Valve function	Flow control – silencer function
Pneumatic connection, port 1	G1/8
Adjusting element	Slotted head screw
Mounting type	Threaded
Standard flow rate 6 -> 0 bar	0 ... 1,000 l/min
Ambient temperature	-10 ... 70 °C
Material housing	Aluminium
Assembly position	Any
Operating pressure complete temperature range	0 ... 10 bar
Operating medium	Compressed air in accordance with ISO8573-1:2010 [7:-:-]
Note on operating and pilot medium	Lubricated operation possible
Medium temperature	-10 ... 70 °C
Product weight	10 g
Material of silencer insert	PE
Material of threaded plug	Aluminium die cast
Materials note	Conforms to RoHS
Material adjusting screw	PA