

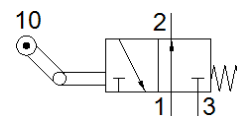
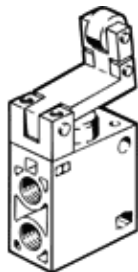
# Roller lever valve

## LO-3-1/4-B

Part number: 8989

FESTO

With idle return, normally open.  
This type is suitable for vacuum.



### Data sheet

Feature	Value
Valve function	3/2 open, monostable
Type of actuation	mechanical
Standard nominal flow rate	600 l/min
Operating pressure	-0.95 ... 10 bar
Design structure	Poppet seat
Nominal size	7 mm
Type of piloting	direct
Ambient temperature	-10 ... 60 °C
Actuating force	50 N
Product weight	250 g
Mounting type	with through hole
Pneumatic connection, port 1	G1/4
Pneumatic connection, port 2	G1/4
Pneumatic connection, port 3	G1/4
Material seals	NBR
Material housing	Aluminium die cast