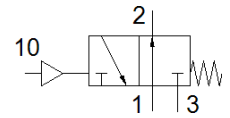
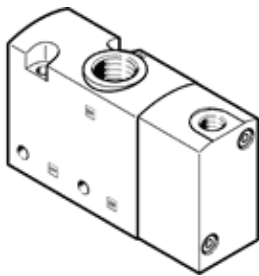


# pneumatic valve

## VUWS-LT30-M32U-M-G38

Part number: 8096575

FESTO



### Data sheet

| Feature                                 | Value   |
|---|---|
| Valve function                          | 3/2 open, monostable  |
| Type of actuation                       | pneumatic   |
| Valve size                              | 31 mm   |
| Standard nominal flow rate              | 1,600 l/min   |
| Operating pressure                      | 1 ... 10 bar  |
| Design structure                        | Poppet seat   |
| Type of reset                           | mechanical spring   |
| Authorisation                           | c UL us - Recognized (OL)   |
| Nominal size                            | 7.9 mm  |
| Exhaust-air function                    | throttleable  |
| Sealing principle                       | soft  |
| Assembly position                       | Any   |
| Manual override                         | None  |
| Type of piloting                        | direct  |
| Pilot air supply                        | Internal  |
| Flow direction                          | non reversible  |
| Overlap                                 | Underlap  |
| Pilot pressure                          | 2.5 ... 10 bar  |
| Switching time off                      | 45 ms   |
| Switching time on                       | 12 ms   |
| Operating medium                        | Compressed air in accordance with ISO8573-1:2010 [7:4:4]                    |
| Note on operating and pilot medium      | Lubricated operation possible (subsequently required for further operation) |
| Corrosion resistance classification CRC | 2 - Moderate corrosion stress   |
| Medium temperature                      | -10 ... 60 °C   |
| Pilot medium                            | Compressed air in accordance with ISO8573-1:2010 [7:4:4]                    |
| Ambient temperature                     | -10 ... 60 °C   |
| Product weight                          | 352 g   |
| Mounting type                           | on manifold rail<br>with through hole<br>Optional                           |
| Scavenging orifice connection           | Non-ducted  |
| Pilot air port 10                       | G1/8  |
| Pneumatic connection, port 1            | G3/8  |
| Pneumatic connection, port 2            | G3/8  |
| Pneumatic connection, port 3            | G3/8  |
| Materials note                          | Conforms to RoHS  |
| Material seals                          | HNBR<br>NBR<br>TPE-U(PU)  |
| Material housing                        | Die-cast aluminium, painted   |
| Material Piston slide                   | POM   |
| Material screws                         | Galvanised steel  |