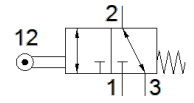
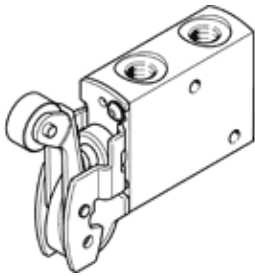


# roller lever valve

## VMEF-RT-M32-M-G18

Part number: 8049239

FESTO



### Data sheet

| Feature                                 | Value   |
|---|---|
| Valve function                          | 3/2-way, monostable   |
| Type of actuation                       | mechanical  |
| Width                                   | 20 mm   |
| Standard nominal flow rate              | 750 l/min   |
| Operating pressure MPa                  | -0.095 ... 1 MPa  |
| Operating pressure                      | -0.95 ... 10 bar  |
| Design structure                        | Roller lever<br>Poppet seat   |
| Type of reset                           | mechanical spring   |
| Max. stroke limit (hard)                | 6.3 mm  |
| Nominal size                            | 5.6 mm  |
| Instructions for use                    | Risk of pinching  |
| Sealing principle                       | soft  |
| Assembly position                       | Any   |
| Type of piloting                        | direct  |
| Flow direction                          | reversible  |
| Overlap                                 | Zero overlap  |
| Max. actuating speed for side actuation | 1.4 m/s   |
| Max. switching frequency                | 3 Hz  |
| Cam angle                               | 30 deg  |
| Operating medium                        | Compressed air in accordance with ISO8573-1:2010 [7:-:-]                    |
| Note on operating and pilot medium      | Lubricated operation possible (subsequently required for further operation) |
| Corrosion resistance classification CRC | 1 - Low corrosion stress  |
| Medium temperature                      | -10 ... 60 °C   |
| Ambient temperature                     | -10 ... 60 °C   |
| Note on ambient temperature             | Influence of heat on wear   |
| Actuating force                         | 35.2 N  |
| Product weight                          | 209 g   |
| Mounting type                           | with through hole   |
| Pneumatic connection, port 1            | G1/8  |
| Pneumatic connection, port 2            | G1/8  |
| Pneumatic connection, port 3            | G1/8  |
| Materials note                          | Conforms to RoHS  |
| Material mounting adaptor               | steel, galvanized   |
| Material seals                          | NBR   |
| Material housing                        | Anodised wrought aluminium alloy  |