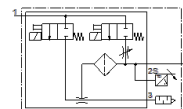
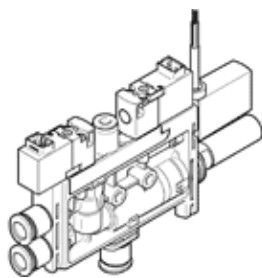


vacuum generator

OVEL-10-H-15-PQ-VQ6-UA-C-A-V1PNLK-H3

Part number: 8049054

FESTO



Data sheet

Feature	Value
Nominal size, Laval nozzle	0.95 mm
Grid dimension	15 mm
Design, silencer	open
Assembly position	Any
Ejector characteristic	High vacuum Standard
Grade of filtration	40 µm
Manual override	Pushing
Integrated function	Ejector pulse, electrical Flow control valve Pressure sensor Electrical on-off valve Filter Open silencer
Design structure	T-shaped
Switching element function	Normally closed contact Normally open contact Switchable
Switching function	Freely programmable
Valve function	closed
Measurement method	Piezoresistive pressure sensor with display
Type of display	LED display 2-digit
Setting options	IO-Link Teach-In Via display and buttons
Operating pressure for max. suction rate	4 bar
Operating pressure	2 ... 7 bar
Operating pressure for max. vacuum	3.8 bar
Max. vacuum	92 %
Nominal operating pressure	4 bar
Max. suction rate with respect to atmosphere	21 l/min
Air supply time at nominal operating pressure	1 s
Operating voltage range DC	21.6 ... 26.4 V
Duty cycle	100 %
Switch output	PNP/NPN, switchable
Characteristic coil data	24 V DC: 1 W
KC mark	KC-EMV
CE mark (see declaration of conformity)	to EU directive for EMC
Operating medium	Compressed air in accordance with ISO8573-1:2010 [7:4:4]
Note on operating and pilot medium	Lubricated operation not possible
Corrosion resistance classification CRC	2 - Moderate corrosion stress
Medium temperature	0 ... 50 °C
Noise level at nominal operating pressure	68 dB(A)
Protection class	IP40
Ambient temperature	0 ... 50 °C

Feature	Value
Product weight	92 g
Operating voltage range, DC sensor	18 ... 30 V
Pressure measuring range	-1 ... 0 bar
Electrical connection, input, function	Ejector pulse Vacuum generation
Electrical connection, input, connection type	2x plug
Electrical connection, input, connection technology	Connection pattern H
Electrical connection, input, number of pins/wires	2
Electrical connection, input, type of mounting	Snap-in locking
Electrical connection, output, function	Sensor
Electrical connection, output, connection type	Cable
Electrical connection, output, connection technology	Open end
Electrical connection, output, number of pins/wires	3
Cable attribute	Suitable for chain link trunking
Cable diameter	2.9 mm
Cable diameter tolerance	± 0,1 mm
Cable length	2.5 m
Nominal conductor cross-section	0.14 mm ²
Mounting type	with through hole
Pneumatic connection, port 1	For tubing outside diameter 6 mm
Pneumatic connection, port 3	Open silencer
Vacuum connection	For tubing outside diameter 6 mm
Cable sheath colour	Grey
Material of connecting thread	POM
Materials note	Conforms to RoHS
Material seals	NBR
Material receiver nozzle	POM
Material filter	POM
Material housing	PA-reinforced
Material cable sheath	PVC
Material adjusting screw	Steel
Material silencer	PE
Material screws	Steel
Material transmitter nozzle	Wrought Aluminium alloy