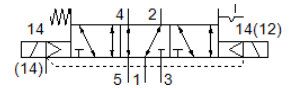


# solenoid valve

## VSVA-B-P53AD-Z-A2-1T1L

Part number: 8039186

FESTO



## Data sheet

| Feature  | Value  |
|--|--|
| Valve function   | 5/3, port 2 pressurised, 4 exhausted   |
| Type of actuation  | electrical   |
| Width  | 18 mm  |
| Standard nominal flow rate                                   | 380 l/min  |
| Operating pressure   | -0.9 ... 10 bar  |
| Design structure   | Piston slide   |
| Type of reset  | mechanical spring<br>Electrical activation   |
| Protection class   | IP65<br>NEMA 4   |
| Nominal size   | 5 mm   |
| Exhaust-air function   | throttleable<br>Via throttle plate<br>Via individual sub-base                                  |
| Sealing principle  | soft   |
| Assembly position  | Any  |
| Manual override  | Covered  |
| Type of piloting   | Piloted  |
| Pilot air supply   | external   |
| Flow direction   | Any  |
| Overlap  | Underlap   |
| Signal status display  | LED  |
| Pilot pressure   | 3 ... 10 bar   |
| Flow rate of valve on individual sub-base                    | 380 l/min  |
| Optimised flow rate of valve pneumatically concatenated flow | 440 l/min  |
| Flow rate of pneumatically linked valve                      | 380 l/min  |
| Asymmetrical switching time off                              | 28 ms for control side 12  |
| Asymmetrical switching time on                               | 12 ms for control side 12<br>9 ms for control side 14  |
| Duty cycle   | 100 %  |
| Max. positive test pulse with logic 0                        | 1,500 µs   |
| Max. negative test pulse with logic 1                        | 800 µs   |
| Nominal operating voltage DC                                 | 24 V   |
| Characteristic coil data                                     | 24 V DC: 1.6 W   |
| Surge strength   | 2.5 kV   |
| Degree of contamination                                      | 3  |
| Permissible voltage fluctuation                              | +/- 10 %   |
| Operating medium   | Compressed air in accordance with ISO8573-1:2010 [7:4:4]                                       |
| Note on operating and pilot medium                           | Lubricated operation possible (subsequently required for further operation)                    |
| Vibration resistance   | Transport application test at severity level 2 in accordance with FN 942017-4 and EN 60068-2-6 |
| Shock resistance   | Shock test with severity level 2 in accordance with FN 942017-5 and EN 60068-2-27              |
| Corrosion resistance classification CRC                      | 0 - No corrosion stress  |
| Medium temperature   | -5 ... 50 °C   |

| <b>Feature</b>                         | <b>Value</b>                                   |
|--|--|
| Relative air humidity                  | 0 - 90 %                                       |
| Sound pressure level                   | 85 dB(A)                                       |
| Ambient temperature                    | -5 ... 50 °C                                   |
| Max. tightening torque, valve mounting | 0.8 ... 1.2 Nm                                 |
| Product weight                         | 172 g  |
| Electrical connection                  | 4-pin<br>Plug<br>according to ISO 15407-2      |
| Mounting type                          | On sub-base                                    |
| Auxiliary pilot air port 12/14         | Manifold block, size 18 mm acc. to ISO 15407-2 |
| Pilot exhaust port 82/84               | Optional<br>Ducted<br>Non-ducted               |
| Pneumatic connection, port 1           | Manifold block, size 18 mm acc. to ISO 15407-2 |
| Pneumatic connection, port 2           | Manifold block, size 18 mm acc. to ISO 15407-2 |
| Pneumatic connection, port 3           | Manifold block, size 18 mm acc. to ISO 15407-2 |
| Pneumatic connection, port 4           | Manifold block, size 18 mm acc. to ISO 15407-2 |
| Pneumatic connection, port 5           | Manifold block, size 18 mm acc. to ISO 15407-2 |
| Materials note                         | Conforms to RoHS                               |
| Material seals                         | FPM<br>NBR                                     |
| Material housing                       | Aluminium die cast<br>PA                       |
| Material screws                        | Galvanised steel                               |