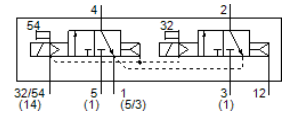
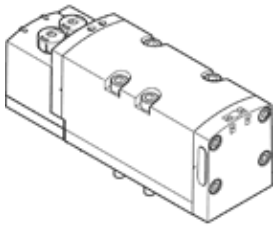


# solenoid valve

## VSVA-B-T32N-AZH-D2-1T1L

Part number: 8034977

FESTO



## Data sheet

Feature	Value
Valve function	2x3/2 closed, monostable
Type of actuation	electrical
Width	52 mm
Standard nominal flow rate	2,400 l/min
Operating pressure	-0.9 ... 10 bar
Design structure	Piston slide
Authorisation	C-Tick c CSA us (OL) c UL us - Recognized (OL)
CE mark (see declaration of conformity)	to EU directive for EMC
Protection class	IP65 NEMA 4
Grid dimension	59 mm
Exhaust-air function	throttleable Via throttle plate Via individual sub-base
Sealing principle	soft
Assembly position	Any
Conforms to standard	ISO 5599-2
Manual override	Pushing
Type of piloting	Piloted
Pilot air supply	external
Flow direction	reversible only
Signal status display	LED
Pilot pressure	3 ... 10 bar
Flow rate of valve	3,000 l/min
Flow rate of valve on individual sub-base	2,600 l/min
Flow rate of pneumatically linked valve	2,400 l/min
Switching time off	30 ms
Switching time on	30 ms
Duty cycle	100 %
Max. positive test pulse with logic 0	1,000 µs
Max. negative test pulse with logic 1	3,500 µs
Nominal breakaway current per solenoid coil	165 mA up to 30 ms
Nominal current with current reduction	35 mA after 30 ms
Characteristic coil data	24 V DC: 4.6 W
Surge strength	2.5 kV
Degree of contamination	3
Permissible voltage fluctuation	+/- 10 %
Operating medium	Compressed air in accordance with ISO8573-1:2010 [7:4:4]
Note on operating and pilot medium	Lubricated operation possible (subsequently required for further operation)
Vibration resistance	Transport application test at severity level 2 in accordance with FN 942017-4 and EN 60068-2-6
Shock resistance	Shock test with severity level 2 in accordance with FN 942017-5 and EN 60068-2-27

<b>Feature</b>	<b>Value</b>
Corrosion resistance classification CRC	0 - No corrosion stress
Medium temperature	-5 ... 50 °C
Relative air humidity	0 - 90 %
Ambient temperature	-5 ... 50 °C
Product weight	740 g
Electrical connection	Plug-in as per ISO 5599-2
Mounting type	On sub-base
Auxiliary pilot air port 12/14	Connection plate size 2 as per ISO 5599-2
Pilot exhaust port 82/84	Optional Not ducted as per standard Ducted
Pneumatic connection, port 1	Connection plate size 2 as per ISO 5599-2
Pneumatic connection, port 2	Connection plate size 2 as per ISO 5599-2
Pneumatic connection, port 3	Connection plate size 2 as per ISO 5599-2
Pneumatic connection, port 4	Connection plate size 2 as per ISO 5599-2
Pneumatic connection, port 5	Connection plate size 2 as per ISO 5599-2
Materials note	Conforms to RoHS
Material seals	FPM HNBR NBR
Material housing	Aluminium die cast PA
Material screws	Galvanised steel