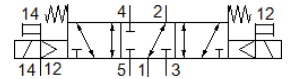
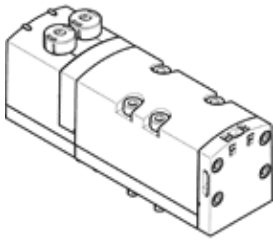


# solenoid valve

## VSVA-B-P53F-ZH-D1-1T1L

Part number: 8034814

FESTO



## Data sheet

| Feature  | Value   |
|--|---|
| Valve function   | 5/3-way, pressurised 1 to 2, 4 to 5 closed                                  |
| Type of actuation  | electrical  |
| Width  | 42 mm   |
| Standard nominal flow rate                                   | 1,400 l/min   |
| Operating pressure   | -0.9 ... 10 bar   |
| Design structure   | Piston slide  |
| Authorisation  | CSA (OL)<br>c UL us - Recognized (OL)                                       |
| Protection class   | IP65<br>NEMA 4  |
| Exhaust-air function   | throttleable<br>Via throttle plate<br>Via individual sub-base               |
| Sealing principle  | soft  |
| Assembly position  | Any   |
| Manual override  | Pushing   |
| Type of piloting   | Piloted   |
| Pilot air supply   | external  |
| Flow direction   | Any   |
| Signal status display  | LED   |
| Pilot pressure   | 3 ... 10 bar  |
| Flow rate of valve   | 1,700 l/min   |
| Flow rate of valve on individual sub-base                    | 1,400 l/min   |
| Optimised flow rate of valve pneumatically concatenated flow | 1,700 l/min   |
| Flow rate of pneumatically linked valve                      | 1,400 l/min   |
| Switching time off   | 65 ms   |
| Switching time on  | 22 ms   |
| Nominal breakaway current per solenoid coil                  | 72 mA up to 30 ms   |
| Characteristic coil data                                     | 24 V DC: 1.6 W  |
| Surge strength   | 2.5 kV  |
| Degree of contamination                                      | 3   |
| Permissible voltage fluctuation                              | +/- 10 %  |
| Operating medium   | Compressed air in accordance with ISO8573-1:2010 [7:4:4]                    |
| Note on operating and pilot medium                           | Lubricated operation possible (subsequently required for further operation) |
| Corrosion resistance classification CRC                      | 0 - No corrosion stress   |
| Relative air humidity  | 0 - 90 %  |
| Ambient temperature  | -5 ... 50 °C  |
| Product weight   | 456 g   |
| Electrical connection  | Plug-in<br>as per ISO 5599-2  |
| Mounting type  | On sub-base   |
| Auxiliary pilot air port 12/14                               | Sub-base size 1 to ISO 5599-2   |
| Pilot exhaust port 82/84                                     | Optional<br>Not ducted as per standard<br>Ducted                            |

| Feature                      | Value                         |
|------------------------------|-------------------------------|
| Pneumatic connection, port 1 | Sub-base size 1 to ISO 5599-2 |
| Pneumatic connection, port 2 | Sub-base size 1 to ISO 5599-2 |
| Pneumatic connection, port 3 | Sub-base size 1 to ISO 5599-2 |
| Pneumatic connection, port 4 | Sub-base size 1 to ISO 5599-2 |
| Pneumatic connection, port 5 | Sub-base size 1 to ISO 5599-2 |
| Materials note               | Conforms to RoHS              |
| Material seals               | FPM<br>HNBR<br>NBR            |
| Material housing             | Aluminium die cast<br>PA      |
| Material screws              | Galvanised steel              |