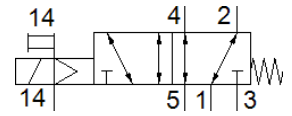
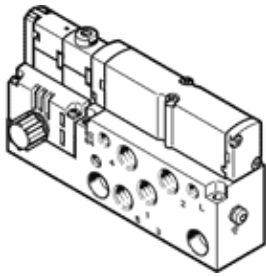


solenoid valve

VMPA14-M1H-MS-S-G1/8-PI

Part number: 8023571

FESTO



Data sheet

| Feature | Value |
|---|--|
| Valve function | 5/2 monostable |
| Type of actuation | electrical |
| Valve size | 14 mm |
| Standard nominal flow rate | 550 ... 670 l/min |
| Operating pressure | -0.9 ... 8 bar |
| Design structure | Piston slide |
| Type of reset | mechanical spring |
| Authorisation | c CSA us (OL) c UL us - Recognized (OL) |
| CE mark (see declaration of conformity) | to EU directive for EMC |
| Protection class | IP65 to IEC 60529 |
| Exhaust-air function | throttleable |
| Sealing principle | soft |
| Assembly position | Any |
| Manual override | detenting Pushing |
| Type of piloting | Piloted |
| Pilot air supply | external |
| Flow direction | reversible |
| Overlap | Positive overlap |
| Signal status display | Yes |
| Pilot pressure | 3 ... 8 bar |
| Suitability for vacuum | Yes |
| Information on standard nominal flow rate | MPA-S: 550 l/min MPA-L: 670 l/min |
| Standard nominal flow rate with QS-8 | 550 ... 670 l/min |
| Max. switching frequency | 2 Hz |
| Switching time off | 30 ms |
| Switching time on | 10 ms |
| Max. positive test pulse with logic 0 | 400 µs |
| Max. negative test pulse with logic 1 | 200 µs |
| Permissible voltage fluctuation | +/- 25 % |
| Operating medium | Compressed air in accordance with ISO8573-1:2010 [7:4:4] |
| Note on operating and pilot medium | Lubricated operation possible (subsequently required for further operation) |
| Vibration resistance | Transport application test at severity level 2 in accordance with FN 942017-4 and EN 60068-2-6 |
| Shock resistance | Shock test with severity level 2 in accordance with FN 942017-5 and EN 60068-2-27 |
| Corrosion resistance classification CRC | 1 - Low corrosion stress |
| Storage temperature | -20 ... 40 °C |
| Medium temperature | -5 ... 50 °C |
| Relative air humidity | Max. 90% at 40°C |
| Ambient temperature | -5 ... 50 °C |
| Max. tightening torque, valve mounting | 0.65 Nm |

| Feature | Value |
|--------------------------------|--|
| Product weight | 255 g |
| Electrical connection | 4-pin M8x1 Plug to EN 60947-5-2 |
| Mounting type | with through hole |
| Auxiliary pilot air port 12/14 | M5 |
| Pilot exhaust port 82/84 | M5 |
| Pneumatic connection, port 1 | G1/8 |
| Pneumatic connection, port 2 | G1/8 |
| Pneumatic connection, port 3 | G1/8 |
| Pneumatic connection, port 4 | G1/8 |
| Pneumatic connection, port 5 | G1/8 |
| Materials note | Conforms to RoHS |
| Material seals | NBR |
| Material housing | Aluminium die cast |