

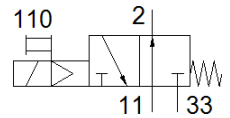
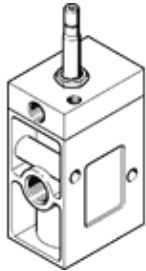
solenoid valve

MOCH-3-1/2

Part number: 7885

FESTO

With manual override.



Data sheet

Feature	Value
Valve function	3/2 open, monostable
Type of actuation	electrical
Width	52 mm
Standard nominal flow rate	3,700 l/min
Operating pressure	1.5 ... 10 bar
Design structure	Poppet seat
Type of reset	mechanical spring
Protection class	IP65
Nominal size	14 mm
Grid dimension	69 mm
Exhaust-air function	throttleable
Sealing principle	soft
Assembly position	Any
Manual override	detenting
Type of piloting	Piloted
Flow direction	non reversible
Overlap	Underlap
b value	0.3
Switching time off	54 ms
Switching time on	22 ms
Max. positive test pulse with logic 0	2,200 µs
Max. negative test pulse with logic 1	3,700 µs
Characteristic coil data	See solenoid coil, to be ordered separately
Operating medium	Compressed air in accordance with ISO8573-1:2010 [7:4:4]
Note on operating and pilot medium	Lubricated operation possible (subsequently required for further operation)
Corrosion resistance classification CRC	1 - Low corrosion stress
Storage temperature	-20 ... 60 °C
Medium temperature	-10 ... 60 °C
Ambient temperature	-5 ... 40 °C
Product weight	1,150 g
Mounting type	on manifold rail with through hole Optional
Pneumatic connection, port 1	G1/2
Pneumatic connection, port 2	G1/2
Pneumatic connection, port 3	G1/2
Materials note	Conforms to RoHS
Material seals	NBR
Material housing	Aluminium die cast