

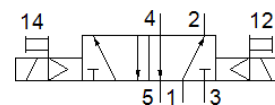
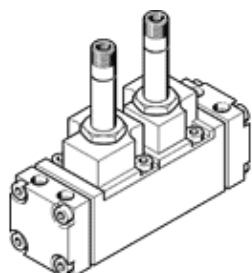
solenoid valve

CJM-5/2-1/2-FH

Part number: 6228

FESTO

With plug socket and manual override, without sub-base



Data sheet

Feature	Value
Valve function	5/2 bistable
Type of actuation	electrical
Operating pressure	1.5 ... 8 bar
Type of piloting	Piloted
Pneumatic connection, port 1	Sub-base
Pneumatic connection, port 2	Sub-base
Pneumatic connection, port 3	Sub-base
Pneumatic connection, port 4	Sub-base
Pneumatic connection, port 5	Sub-base
Materials note	Contains PWIS substances