

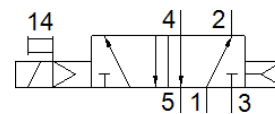
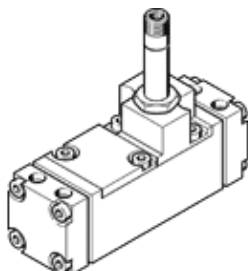
solenoid valve

CM-5/2-1/4-FH

Part number: 6154

FESTO

With plug socket and manual override, without sub-base



Data sheet

Feature	Value
Valve function	5/2 monostable
Type of actuation	electrical
Standard nominal flow rate	1,400 l/min
Operating pressure	1.5 ... 8 bar
Nominal size	6.5 mm
Assembly position	Any
Manual override	Pushing
Max. switching frequency	40 Hz
Switching time on	28 ms
Operating medium	Compressed air in accordance with ISO8573-1:2010 [7:4:4]
Note on operating and pilot medium	Lubricated operation possible (subsequently required for further operation)
Medium temperature	-10 ... 60 °C
Mounting type	On sub-base
Pilot air port 12	G1/8
Pilot air port 14	G1/8
Pneumatic connection, port 1	G1/4
Pneumatic connection, port 2	G1/4
Pneumatic connection, port 3	G1/4
Pneumatic connection, port 4	G1/4
Pneumatic connection, port 5	G1/4
Materials note	Contains PWIS substances
Material seals	NBR
Material housing	Wrought Aluminium alloy
Material membrane	PUR