

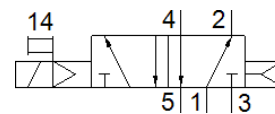
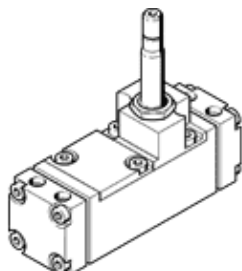
solenoid valve

CM-5/2-1/2-CH

Part number: 6117

FESTO

With plug socket and manual override, without sub-base



Data sheet

Feature	Value
Valve function	5/2 monostable
Operating pressure	1.5 ... 10 bar
Pneumatic connection, port 1	G1/2
Pneumatic connection, port 2	G1/2
Pneumatic connection, port 3	G1/2
Pneumatic connection, port 4	G1/2
Pneumatic connection, port 5	G1/2
Materials note	Contains PWIS substances