

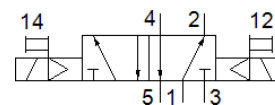
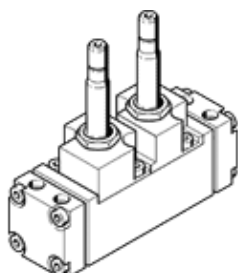
# solenoid valve

## CJM-5/2-1/2-CH

Part number: 6112

FESTO

With plug socket and manual override, without sub-base



### Data sheet

Feature	Value
Valve function	5/2 bistable
Type of actuation	electrical
Operating pressure	1.5 ... 10 bar
Type of piloting	Piloted
Pneumatic connection, port 1	Sub-base
Pneumatic connection, port 2	Sub-base
Pneumatic connection, port 3	Sub-base
Pneumatic connection, port 4	Sub-base
Pneumatic connection, port 5	Sub-base
Materials note	Contains PWIS substances