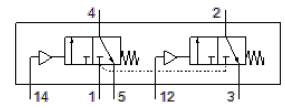
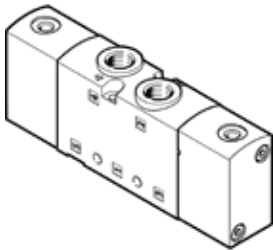


pneumatic valve VUWS-LT20-T32C-M-G18

Part number: 577529

FESTO



Data sheet

| Feature | Value |
|---|--|
| Valve function | 2x3/2 closed, monostable |
| Type of actuation | pneumatic |
| Valve size | 21 mm |
| Standard nominal flow rate | 600 l/min |
| Operating pressure | -0.9 ... 10 bar |
| Design structure | Poppet seat |
| Type of reset | mechanical spring |
| Authorisation | c UL us - Recognized (OL) |
| Nominal size | 5.2 mm |
| Exhaust-air function | throttleable |
| Sealing principle | soft |
| Assembly position | Any |
| Manual override | None |
| Type of piloting | direct |
| Pilot air supply | Internal |
| Flow direction | non reversible |
| Overlap | Underlap |
| Pilot pressure | 1.5 ... 10 bar |
| Switching time off | 19 ms |
| Switching time on | 6 ms |
| Operating medium | Compressed air in accordance with ISO8573-1:2010 [7:4:4] |
| Note on operating and pilot medium | Lubricated operation possible (subsequently required for further operation) |
| Vibration resistance | Transport application test at severity level 2 in accordance with FN 942017-4 and EN 60068-2-6 |
| Shock resistance | Shock test with severity level 2 in accordance with FN 942017-5 and EN 60068-2-27 |
| Corrosion resistance classification CRC | 2 - Moderate corrosion stress |
| Medium temperature | -5 ... 60 °C |
| Pilot medium | Compressed air in accordance with ISO8573-1:2010 [7:4:4] |
| Ambient temperature | -5 ... 60 °C |
| Product weight | 189 g |
| Mounting type | on manifold rail with through hole Optional |
| Scavenging orifice connection | Non-ducted |
| Pilot air port 12 | M5 |
| Pilot air port 14 | M5 |
| Pneumatic connection, port 1 | G1/8 |
| Pneumatic connection, port 2 | G1/8 |
| Pneumatic connection, port 3 | G1/8 |
| Materials note | Conforms to RoHS |
| Material seals | HNBR NBR TPE-U(PU) |
| Material housing | Aluminium die cast Painted |
| Material screws | Galvanised steel |