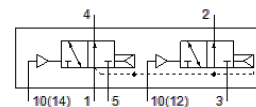


# pneumatic valve VUWG-L10-T32U-A-M7

Part number: 573822

FESTO



## Data sheet

| Feature                                 | Value                                                                       |
|-----------------------------------------|-----------------------------------------------------------------------------|
| Valve function                          | 2x3/2 open, monostable                                                      |
| Type of actuation                       | pneumatic                                                                   |
| Valve size                              | 10 mm                                                                       |
| Standard nominal flow rate              | 190 l/min                                                                   |
| Operating pressure                      | 1.5 ... 10 bar                                                              |
| Design structure                        | Piston slide                                                                |
| Type of reset                           | Air spring                                                                  |
| Grid dimension                          | 10.5 mm                                                                     |
| Exhaust-air function                    | throttleable                                                                |
| Sealing principle                       | soft                                                                        |
| Assembly position                       | Any                                                                         |
| Manual override                         | None                                                                        |
| Type of piloting                        | direct                                                                      |
| Flow direction                          | reversible with restrictions                                                |
| Overlap                                 | Positive overlap                                                            |
| Pilot pressure                          | 1.5 ... 10 bar                                                              |
| Suitability for vacuum                  | No                                                                          |
| Switching time off                      | 9 ms                                                                        |
| Switching time on                       | 4 ms                                                                        |
| Operating medium                        | Compressed air in accordance with ISO8573-1:2010 [7:4:4]                    |
| Note on operating and pilot medium      | Lubricated operation possible (subsequently required for further operation) |
| Corrosion resistance classification CRC | 2 - Moderate corrosion stress                                               |
| Medium temperature                      | -5 ... 50 °C                                                                |
| Pilot medium                            | Compressed air in accordance with ISO8573-1:2010 [7:4:4]                    |
| Ambient temperature                     | -5 ... 60 °C                                                                |
| Product weight                          | 48 g                                                                        |
| Mounting type                           | On PR manifold<br>with through hole<br>Optional                             |
| Pilot air port 12                       | M5                                                                          |
| Pilot air port 14                       | M5                                                                          |
| Pneumatic connection, port 1            | M7                                                                          |
| Pneumatic connection, port 2            | M7                                                                          |
| Pneumatic connection, port 3            | M7                                                                          |
| Pneumatic connection, port 4            | M7                                                                          |
| Pneumatic connection, port 5            | M7                                                                          |
| Materials note                          | Conforms to RoHS                                                            |
| Material seals                          | HNBR<br>NBR                                                                 |
| Material housing                        | Aluminium<br>Anodised                                                       |