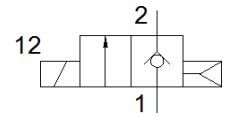
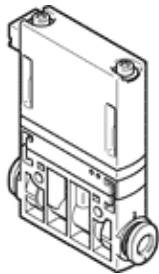


solenoid valve

MHJ9-QS-4-LF

Part number: 572079

FESTO



Data sheet

Feature	Value
Valve function	2/2 closed, monostable
Type of actuation	electrical
Width	9 mm
Standard nominal flow rate	50 l/min
Operating pressure	0.5 ... 8 bar
Design structure	Poppet valve without spring return
Type of reset	Air spring
Protection class	IP40
Grid dimension	9.5 mm
Note on operation	Do not operate without flow For block mounting with flow, max. ambient temperature 45°C.
Sealing principle	Hard
Assembly position	Any
Manual override	None
Type of piloting	direct
Flow direction	non reversible
b value	0.5
C value	0.2 l/sbar
Maximum switching frequency	500 Hz
Switching time on at 4 bar and 24 V in new condition	0.7 ms
Switching time off at 4 bar and 24 V in new condition	0.9 ms
Switching time on at 4 bar and 48 V in new condition	0.6 ms
Switching time off at 4 bar and 48 V in new condition	0.8 ms
Switching time on at 4 bar and 12 V in new condition	1 ms
Switching time off at 4 bar and 12 V in new condition	0.9 ms
Switching time on at 0.5 bar and 24 V in new condition	0.7 ms
Switching time off at 0.5 bar and 24 V in new condition	0.9 ms
Switching time on at 8 bar and 24 V in new condition	0.8 ms
Switching time off at 8 bar and 24 V in new condition	0.9 ms
Tolerance for Switching time OFF	+15 %/-25 %
Tolerance for Switching time ON	+/-15 %
Operating voltage range DC	12 ... 53 V
Duty cycle	100 %
Note regarding operating voltage	Only with cable MHJ9-KMH-...
Coil resistance	2.5 Ohm
Operating medium	Compressed air in accordance with ISO8573-1:2010 [7:4:4]
Note on operating and pilot medium	Lubricated operation not possible
Restriction ambient and medium temperature	related to switching frequency
Corrosion resistance classification CRC	2 - Moderate corrosion stress
Storage temperature	-20 ... 50 °C
Max. permissible solenoid surface temperature	120 °C
Medium temperature	-5 ... 60 °C
Ambient temperature	-5 ... 60 °C
Product weight	30 g
Electrical connection	2-pin Plug KMH

Feature	Value
Mounting type	Line installation with through hole Optional
Pneumatic connection, port 1	QS-4
Pneumatic connection, port 2	QS-4
Materials note	Conforms to RoHS
Material seals	HNBR
Material housing	PA-reinforced
Material screws	Steel