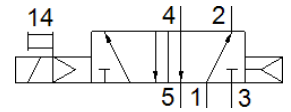
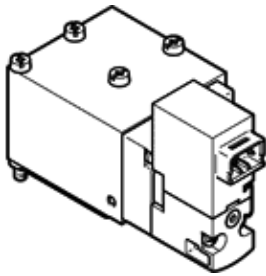


# solenoid valve

## VOVG-B12-M52Q-AH-F-1H2

Part number: 560713

FESTO



### Data sheet

| Feature                                 | Value   |
|---|---|
| Valve function                          | 5/2 monostable  |
| Type of actuation                       | electrical  |
| Width                                   | 25 mm   |
| Standard nominal flow rate              | 180 l/min   |
| Operating pressure                      | 2 ... 8 bar   |
| Design structure                        | Piston slide  |
| Type of reset                           | Air spring  |
| Protection class                        | IP40  |
| Nominal size                            | 2.1 mm  |
| Exhaust-air function                    | throttleable  |
| Sealing principle                       | soft  |
| Assembly position                       | Any   |
| Manual override                         | Pushing   |
| Type of piloting                        | Piloted   |
| Flow direction                          | non reversible  |
| Overlap                                 | Positive overlap  |
| Switching time off                      | 18 ms   |
| Switching time on                       | 15 ms   |
| Characteristic coil data                | 24 V DC: 1 W  |
| Operating medium                        | Compressed air in accordance with ISO8573-1:2010 [7:4:4]                    |
| Note on operating and pilot medium      | Lubricated operation possible (subsequently required for further operation) |
| Corrosion resistance classification CRC | 0 - No corrosion stress   |
| Medium temperature                      | -5 ... 50 °C  |
| Pilot medium                            | Compressed air in accordance with ISO8573-1:2010 [7:4:4]                    |
| Ambient temperature                     | -5 ... 50 °C  |
| Electrical connection                   | 2-pin<br>Plug   |
| Pneumatic connection, port 1            | Sub-base  |
| Pneumatic connection, port 2            | Sub-base  |
| Pneumatic connection, port 3            | Sub-base  |
| Materials note                          | Conforms to RoHS  |
| Material seals                          | FPM<br>HNBR<br>NBR  |
| Material housing                        | Wrought Aluminium alloy   |