

solenoid valve

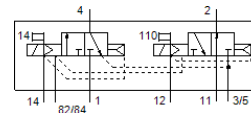
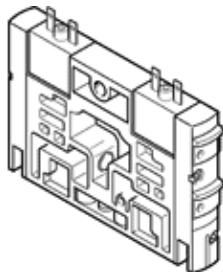
CPV14-M1H-3OLS-3GLS-K-1/8

Part number: 559649

FESTO

For valve terminal CPV. The valve housing contains two 3/2-way valves, one of which is normally open, the other is normally closed.

This type is suitable for vacuum.



Data sheet

| Feature | Value |
|---|--|
| Valve function | 3/2 open/closed, monostable |
| Type of actuation | electrical |
| Valve size | 14 mm |
| Standard nominal flow rate | 800 l/min |
| Operating pressure | -0.9 ... 10 bar |
| Design structure | Piston slide |
| Type of reset | Air spring |
| Protection class | IP65 |
| Nominal size | 6 mm |
| Exhaust-air function | not throttleable |
| Sealing principle | soft |
| Assembly position | Any |
| Manual override | detenting Pushing |
| Type of piloting | Piloted |
| Pilot air supply | external Internal |
| Flow direction | non reversible |
| Overlap | Positive overlap |
| Pilot pressure | 3 ... 8 bar |
| b value | 0.42 |
| C value | 3.2 l/sbar |
| Switching time off | 30 ms |
| Switching time on | 24 ms |
| Duty cycle | 100% with holding current reduction |
| Electrical power consumption | 0.65 W |
| Max. positive test pulse with logic 0 | 1,400 µs |
| Max. negative test pulse with logic 1 | 400 µs |
| Operating medium | Compressed air in accordance with ISO8573-1:2010 [7:4:4] |
| Note on operating and pilot medium | Lubricated operation possible (subsequently required for further operation) |
| Vibration resistance | Transport application test at severity level 2 in accordance with FN 942017-4 and EN 60068-2-6 |
| Shock resistance | Shock test with severity level 2 in accordance with FN 942017-5 and EN 60068-2-27 |
| Corrosion resistance classification CRC | 2 - Moderate corrosion stress |
| Storage temperature | -20 ... 40 °C |
| Medium temperature | -5 ... 50 °C |
| Ambient temperature | -5 ... 50 °C |
| Product weight | 120 g |
| Mounting type | with through hole |
| Auxiliary pilot air port 12/14 | Common line |

| Feature | Value |
|------------------------------|--|
| Pilot exhaust port 82/84 | Common line |
| Pneumatic connection, port 1 | Common line with pressure cut-off |
| Pneumatic connection, 11 | Common line with pressure cut-off |
| Pneumatic connection, port 2 | G1/8 |
| Pneumatic ports 3/5 combined | Common line |
| Pneumatic connection, port 4 | G1/8 |
| Materials note | Conforms to RoHS |
| Material seals | HNBR NBR |
| Material housing | Aluminium die cast Brass POM PPS Steel |