

# solenoid valve

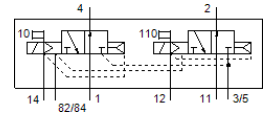
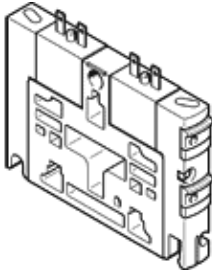
## CPV10-M1H-2X3-OLS-K-M7

Part number: 559641

FESTO

For valve terminal CPV. The valve housing contains two 3/2-way valves, both of which are normally open.

This type is suitable for vacuum.



## Data sheet

Feature	Value
Valve function	2x3/2 open, monostable
Type of actuation	electrical
Valve size	10 mm
Standard nominal flow rate	400 l/min
Operating pressure	-0.9 ... 10 bar
Design structure	Piston slide
Type of reset	Air spring
Protection class	IP65
Nominal size	4 mm
Exhaust-air function	not throttleable
Sealing principle	soft
Assembly position	Any
Manual override	detenting Pushing
Type of piloting	Piloted
Pilot air supply	external Internal
Flow direction	non reversible
Overlap	Positive overlap
Pilot pressure	3 ... 8 bar
b value	0.4
C value	1.6 l/sbar
Switching time off	25 ms
Switching time on	17 ms
Duty cycle	100% with holding current reduction
Electrical power consumption	0.46 W
Max. positive test pulse with logic 0	1,400 µs
Max. negative test pulse with logic 1	700 µs
Operating medium	Compressed air in accordance with ISO8573-1:2010 [7:4:4]
Note on operating and pilot medium	Lubricated operation possible (subsequently required for further operation)
Corrosion resistance classification CRC	2 - Moderate corrosion stress
Storage temperature	-20 ... 40 °C
Medium temperature	-5 ... 50 °C
Ambient temperature	-5 ... 50 °C
Product weight	70 g
Mounting type	with through hole
Auxiliary pilot air port 12/14	Common line
Pilot exhaust port 82/84	Common line
Pneumatic connection, port 1	Common line with pressure cut-off
Pneumatic connection, 11	Common line with pressure cut-off
Pneumatic connection, port 2	M7

Feature	Value
Pneumatic ports 3/5 combined	Common line
Pneumatic connection, port 4	M7
Materials note	Conforms to RoHS
Material seals	HNBR NBR
Material housing	Aluminium die cast Brass POM PPS Steel