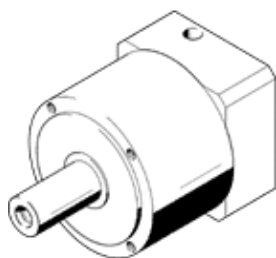


# gear unit EMGA-160-P-G3-SAS-140

Part number: 552200

FESTO

Suitable for servo motors.



## Data sheet

Feature	Value
Gear unit flange size	160 mm
Motor flange size	140 mm
Torsional backlash	0.1 deg
Type of gear unit	Planetary gear unit
Gear unit ratio	3:1
Max. input speed	6,500 1/min
Operating temperature of gear unit	-25 ... 90 °C
Protection class	IP54
Continuous output torque	400 Nm
Mass moment of inertia of gear unit	12.14 kgcm <sup>2</sup>
Max. output torque	640 Nm
Max. efficiency	98 %
Torsional resistance	38 Nm/arcmin
Product weight	18,000 g
Gear unit interface, output shaft	160G
Gear unit interface, drive shaft	140A
Materials note	Conforms to RoHS