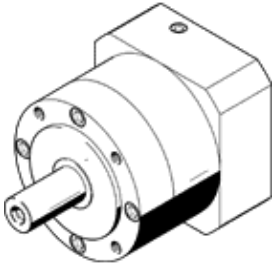


gear unit EMGA-120-P-G3-SAS-100

Part number: 552196
☆ Core product range

FESTO

Suitable for servo motors.



Data sheet

Feature	Value
Gear unit flange size	120 mm
Motor flange size	100 mm
Torsional backlash	0.12 deg
Type of gear unit	Planetary gear unit
Gear unit ratio	3:1
Max. input speed	6,500 1/min
Operating temperature of gear unit	-25 ... 90 °C
Protection class	IP54
Continuous output torque	115 Nm
Mass moment of inertia of gear unit	2.63 kgcm ²
Max. output torque	184 Nm
Max. efficiency	98 %
Torsional resistance	12 Nm/arcmin
Product weight	6,000 g
Gear unit interface, output shaft	120G
Gear unit interface, drive shaft	100A
Materials note	Conforms to RoHS