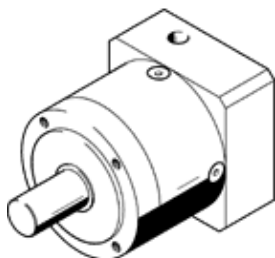


gear unit EMGA-80-P-G3-SAS-70

Part number: 552192

FESTO

Suitable for servo motors.



Data sheet

Feature	Value
Gear unit flange size	80 mm
Motor flange size	70 mm
Torsional backlash	0.12 deg
Type of gear unit	Planetary gear unit
Gear unit ratio	3:1
Max. input speed	7,000 1/min
Operating temperature of gear unit	-25 ... 90 °C
Protection class	IP54
Continuous output torque	85 Nm
Mass moment of inertia of gear unit	0.77 kgcm ²
Max. output torque	136 Nm
Max. efficiency	98 %
Torsional resistance	6 Nm/arcmin
Product weight	2,100 g
Gear unit interface, output shaft	80G
Gear unit interface, drive shaft	70A
Materials note	Conforms to RoHS