

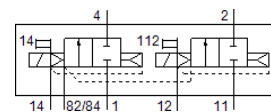
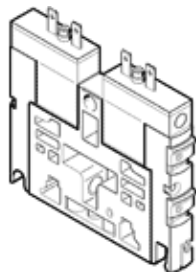
solenoid valve

CPV10-M1H-2X2-GLS-M7-B-EX

Part number: 550701

FESTO

For valve terminal CPV. The valve housing contains two 2/2-way valves, both of which are normally closed; ATEX design.



Data sheet

Feature	Value
Valve function	2x2/2 closed, monostable
Type of actuation	electrical
Valve size	10 mm
Standard nominal flow rate	400 l/min
Operating pressure	0 ... 10 bar
Design structure	Piston slide
Type of reset	Air spring
Protection class	IP50
Nominal size	4 mm
Exhaust-air function	not throttleable
Sealing principle	soft
Assembly position	Any
Manual override	detenting Pushing
Type of piloting	Piloted
Pilot air supply	external Internal
Flow direction	non reversible
Overlap	Positive overlap
Pilot pressure	3 ... 8 bar
b value	0.35
C value	1.6 l/sbar
Switching time off	17 ms
Switching time on	15 ms
Duty cycle	100% with holding current reduction
Required current consumption	0.016 A
Max. input power	0,76 W
Max. input voltage	32 V
Max. input current	0.2 A
effective inductivity	negligibly small
effective capacity	negligibly small
Operating medium	Compressed air in accordance with ISO8573-1:2010 [7:4:4]
Note on operating and pilot medium	Lubricated operation possible (subsequently required for further operation)
Corrosion resistance classification CRC	2 - Moderate corrosion stress
Storage temperature	-20 ... 40 °C
Medium temperature	-5 ... 50 °C
Ambient temperature	-5 ... 50 °C
Product weight	70 g
Mounting type	with through hole
Auxiliary pilot air port 12/14	Common line
Pilot exhaust port 82/84	Common line
Pneumatic connection, port 1	Common line

Feature	Value
Pneumatic connection, 11	Common line
Pneumatic connection, port 2	M7
Pneumatic ports 3/5 combined	Common line
Pneumatic connection, port 4	M7
Materials note	Conforms to RoHS
Material seals	HNBR NBR
Material housing	Aluminium die cast Brass POM PPS Steel