

basic valve

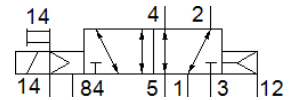
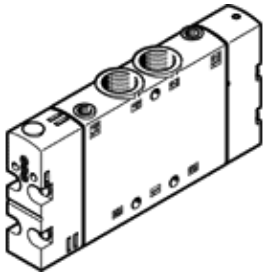
CPE18-P1-5LS-1/4

Part number: 550154

FESTO

Very compact assembly, with CNOMO interface.

This type is suitable for vacuum. Manifold assembly is only possible with 5/2 and 5/3 way valves CPE10/14/18, please do not combine with 3/2 way valves.



Data sheet

| Feature | Value |
|---|--|
| Valve function | 5/2 monostable |
| Type of actuation | Via pilot interface to ISO 15218 |
| Width | 18 mm |
| Standard nominal flow rate | 1,500 l/min |
| Operating pressure | -0.9 ... 10 bar |
| Design structure | Piston slide |
| Type of reset | Air spring |
| Maritime classification | see certificate |
| Nominal size | 8 mm |
| Exhaust-air function | throttleable |
| Sealing principle | soft |
| Assembly position | Any |
| Manual override | Pushing |
| Type of piloting | Piloted |
| Pilot air supply | external |
| Flow direction | reversible |
| Valve position identification | Inscription label holder |
| Overlap | Positive overlap |
| Pilot pressure | 2.5 ... 10 bar |
| Switching time off | 32 ms |
| Switching time on | 30 ms |
| Duty cycle | 100 % |
| Max. positive test pulse with logic 0 | 3,300 µs |
| Max. negative test pulse with logic 1 | 3,100 µs |
| Permissible voltage fluctuation | -15 % / +10 % |
| Operating medium | Compressed air in accordance with ISO8573-1:2010 [7:4:4] |
| Note on operating and pilot medium | Lubricated operation possible (subsequently required for further operation) |
| Vibration resistance | Transport application test at severity level 2 in accordance with FN 942017-4 and EN 60068-2-6 |
| Shock resistance | Shock test with severity level 2 in accordance with FN 942017-5 and EN 60068-2-27 |
| Corrosion resistance classification CRC | 2 - Moderate corrosion stress |
| Medium temperature | -5 ... 50 °C |
| Pilot medium | Compressed air in accordance with ISO8573-1:2010 [7:4:4] |
| Ambient temperature | -5 ... 50 °C |
| Product weight | 180 g |
| Mounting type | with through hole |
| Pilot exhaust port 82 | M5 |
| Pilot exhaust port 84 | M5 |
| Pilot air port 12 | M5 |
| Pilot air port 14 | M5 |

| Feature | Value |
|------------------------------|--------------------|
| Pneumatic connection, port 1 | G1/4 |
| Pneumatic connection, port 2 | G1/4 |
| Pneumatic connection, port 3 | G1/4 |
| Pneumatic connection, port 4 | G1/4 |
| Pneumatic connection, port 5 | G1/4 |
| Materials note | Conforms to RoHS |
| Material seals | NBR |
| Material housing | Aluminium die cast |