

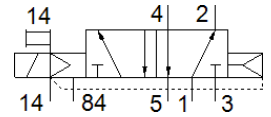
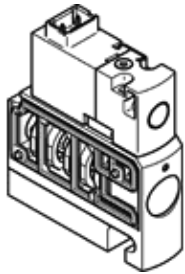
solenoid valve

CPVSC1-M5H-M-T-Q3

Part number: 547372

FESTO

For valve terminal CPV-SC, QS push-in connector.
This type is suitable for vacuum.



Data sheet

Feature	Value
Valve function	5/2 monostable
Type of actuation	electrical
Valve size	10 mm
Standard nominal flow rate	170 l/min
Operating pressure	-0.9 ... 7 bar
Design structure	Piston slide
Type of reset	Air spring
Authorisation	c UL us - Recognized (OL)
Protection class	IP40
Exhaust-air function	not throttleable
Sealing principle	soft
Assembly position	Any
Manual override	Pushing
Type of piloting	Piloted
Pilot air supply	external
Flow direction	non reversible
Overlap	Positive overlap
Pilot pressure	3 ... 7 bar
Switching time off	10 ms
Switching time on	10 ms
Max. positive test pulse with logic 0	500 µs
Max. negative test pulse with logic 1	400 µs
Characteristic coil data	12 V DC: 1 W
Operating medium	Compressed air in accordance with ISO8573-1:2010 [7:4:4]
Note on operating and pilot medium	Lubricated operation possible (subsequently required for further operation)
Vibration resistance	Transport application test at severity level 2 in accordance with FN 942017-4 and EN 60068-2-6
Shock resistance	Shock test with severity level 2 in accordance with FN 942017-5 and EN 60068-2-27
Corrosion resistance classification CRC	1 - Low corrosion stress
Medium temperature	-5 ... 50 °C
Ambient temperature	-5 ... 50 °C
Product weight	30.5 g
Electrical connection	2-pin Plug
Mounting type	with through hole
Pilot exhaust port 82/84	Common line
Pneumatic connection, port 1	Common line
Pneumatic connection, port 2	QS-3
Pneumatic ports 3/5 combined	Common line
Pneumatic connection, port 4	QS-3
Materials note	Conforms to RoHS
Material seals	NBR
Material housing	Aluminium die cast