

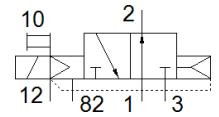
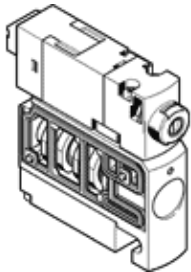
solenoid valve

CPVSC1-M1LH-N-H-Q30

Part number: 547326

FESTO

For valve terminal CPV-SC, QS push-in connector.
This type is suitable for vacuum.



Data sheet

Feature	Value
Valve function	3/2 open, monostable
Type of actuation	electrical
Valve size	10 mm
Standard nominal flow rate	170 l/min
Operating pressure	-0.9 ... 7 bar
Design structure	Piston slide
Type of reset	Air spring
Protection class	IP40
Exhaust-air function	not throttleable
Sealing principle	soft
Assembly position	Any
Manual override	detenting Pushing
Type of piloting	Piloted
Pilot air supply	external
Flow direction	non reversible
Overlap	Positive overlap
Signal status display	LED
Pilot pressure	3 ... 7 bar
Switching time off	10 ms
Switching time on	10 ms
Characteristic coil data	24 V DC: 1 W
Operating medium	Compressed air in accordance with ISO8573-1:2010 [7:4:4]
Note on operating and pilot medium	Lubricated operation possible (subsequently required for further operation)
Vibration resistance	Transport application test at severity level 2 in accordance with FN 942017-4 and EN 60068-2-6
Shock resistance	Shock test with severity level 2 in accordance with FN 942017-5 and EN 60068-2-27
Corrosion resistance classification CRC	1 - Low corrosion stress
Medium temperature	-5 ... 50 °C
Ambient temperature	-5 ... 50 °C
Product weight	30.5 g
Electrical connection	2-pin Plug
Mounting type	with through hole
Pilot exhaust port 82/84	Common line
Pneumatic connection, port 1	Common line
Pneumatic connection, port 2	QS-3
Pneumatic ports 3/5 combined	Common line
Pneumatic connection, port 4	QS-3
Materials note	Conforms to RoHS
Material seals	NBR
Material housing	Aluminium die cast