

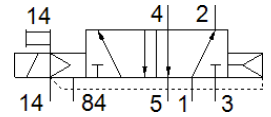
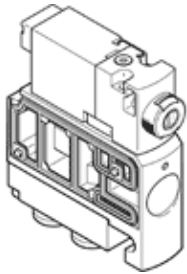
solenoid valve

CPVSC1-M1H-M-H-Q3

Part number: 547296

FESTO

For valve terminal CPV-SC, QS push-in connector.
This type is suitable for vacuum.



Data sheet

| Feature | Value |
|---|--|
| Valve function | 5/2 monostable |
| Type of actuation | electrical |
| Valve size | 10 mm |
| Standard nominal flow rate | 170 l/min |
| Operating pressure | -0.9 ... 7 bar |
| Design structure | Piston slide |
| Type of reset | Air spring |
| Protection class | IP40 |
| Exhaust-air function | not throttleable |
| Sealing principle | soft |
| Assembly position | Any |
| Manual override | detenting Pushing |
| Type of piloting | Piloted |
| Pilot air supply | external |
| Flow direction | non reversible |
| Overlap | Positive overlap |
| Pilot pressure | 3 ... 7 bar |
| Switching time off | 10 ms |
| Switching time on | 10 ms |
| Max. positive test pulse with logic 0 | 500 µs |
| Max. negative test pulse with logic 1 | 400 µs |
| Characteristic coil data | 24 V DC: 1 W |
| Operating medium | Compressed air in accordance with ISO8573-1:2010 [7:4:4] |
| Note on operating and pilot medium | Lubricated operation possible (subsequently required for further operation) |
| Vibration resistance | Transport application test at severity level 2 in accordance with FN 942017-4 and EN 60068-2-6 |
| Shock resistance | Shock test with severity level 2 in accordance with FN 942017-5 and EN 60068-2-27 |
| Corrosion resistance classification CRC | 1 - Low corrosion stress |
| Medium temperature | -5 ... 50 °C |
| Ambient temperature | -5 ... 50 °C |
| Product weight | 30.5 g |
| Electrical connection | 2-pin Plug |
| Mounting type | with through hole |
| Pilot exhaust port 82/84 | Common line |
| Pneumatic connection, port 1 | Common line |
| Pneumatic connection, port 2 | QS-3 |
| Pneumatic ports 3/5 combined | Common line |
| Pneumatic connection, port 4 | QS-3 |
| Materials note | Conforms to RoHS |
| Material seals | NBR |
| Material housing | Aluminium die cast |