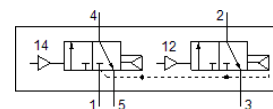
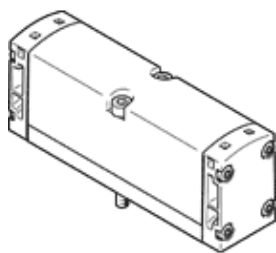


pneumatic valve VSPA-B-T32C-A1

Part number: 546711

FESTO

Width 26 mm



Data sheet

Feature	Value
Valve function	2x3/2 closed, monostable
Type of actuation	pneumatic
Width	26 mm
Standard nominal flow rate	900 l/min
Operating pressure	2 ... 10 bar
Design structure	Piston slide
Type of reset	Air spring
Nominal size	9 mm
Exhaust-air function	throttleable
Sealing principle	soft
Assembly position	Any
Conforms to standard	ISO 15407-1 VDMA 24563
Type of piloting	direct
Flow direction	non reversible
Overlap	Positive overlap
Pilot pressure	2 ... 10 bar
Flow rate of valve	1,250 l/min
Flow rate of valve on individual sub-base	1,000 l/min
Flow rate of pneumatically linked valve	900 l/min
Switching time off	28 ms
Switching time on	15 ms
Operating medium	Compressed air in accordance with ISO8573-1:2010 [7:4:4]
Note on operating and pilot medium	Lubricated operation possible (subsequently required for further operation)
Corrosion resistance classification CRC	0 - No corrosion stress
Medium temperature	-10 ... 60 °C
Relative air humidity	0 - 90 %
Pilot medium	Compressed air in accordance with ISO8573-1:2010 [7:4:4]
Ambient temperature	-10 ... 60 °C
Max. tightening torque, valve mounting	1.8 ... 2.2 Nm
Product weight	180 g
Pilot air port 12	Connection plate size 26 mm, according to ISO 15407-1
Pilot air port 14	Connection plate size 26 mm, according to ISO 15407-1
Pneumatic connection, port 1	Connection plate size 26 mm, according to ISO 15407-1
Pneumatic connection, port 2	Connection plate size 26 mm, according to ISO 15407-1
Pneumatic connection, port 3	Connection plate size 26 mm, according to ISO 15407-1
Pneumatic connection, port 4	Connection plate size 26 mm, according to ISO 15407-1
Pneumatic connection, port 5	Connection plate size 26 mm, according to ISO 15407-1
Materials note	Conforms to RoHS
Material seals	NBR
Material housing	Aluminium die cast
Material screws	Steel Galvanised