

on-off valve

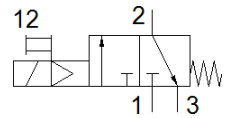
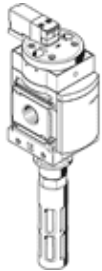
MS6-EE-1/2-10V24-S

Part number: 542602

★ Core product range

FESTO

Electrical, with silencer, direction of flow: from left to right



Data sheet

Feature	Value
Design structure	Piston slide
Type of actuation	electrical
Exhaust-air function	not throttleable
Manual override	Pushing
Type of reset	mechanical spring
Type of piloting	Piloted
Valve function	3/2 closed, monostable
Operating pressure	4 ... 10 bar
C value	29 l/sbar
b value	0.4
Standard nominal flow rate	7,000 l/min
Duty cycle	100 %
Characteristic coil data	24 V DC: 2.5 W
Permissible voltage fluctuation	+/- 10 %
Operating medium	Compressed air in accordance with ISO8573-1:2010 [7:4:4] Inert gases
Note on operating and pilot medium	Lubricated operation possible (subsequently required for further operation)
Corrosion resistance classification CRC	2 - Moderate corrosion stress
Materials note	Conforms to RoHS
Medium temperature	-10 ... 60 °C
Protection class	IP65
Ambient temperature	-10 ... 50 °C
Authorisation	c UL us - Recognized (OL)
Food-safe	See Supplementary material information
Mounting type	Line installation with accessories Optional
Assembly position	Any
Flow direction	non reversible
Product weight	816 g
Pneumatic connection, port 1	G1/2
Pneumatic connection, port 2	G1/2
Pneumatic connection, port 3	G1/2
Pilot air supply	Internal
Electrical connection	Plug pattern type C to EN 175301-803 Plug Per DIN EN 175301-803 Cubic design
Material seals	NBR
Material housing	Aluminium die cast