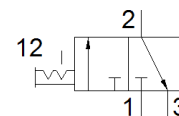
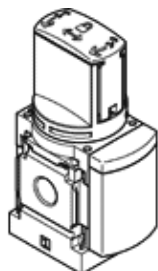


on-off valve MS6-EM1-1/4

Part number: 541271

FESTO

Manual, direction of flow: from left to right.



Data sheet

| Feature | Value |
|---|---|
| Design structure | Rotary slide valve |
| Type of actuation | manual |
| Exhaust-air function | not throttleable |
| Type of piloting | direct |
| Valve function | 3/2 bistable |
| Operating pressure | 0 ... 18 bar |
| C value | 10.7 l/sbar |
| b value | 0.56 |
| Standard nominal flow rate | 3,000 l/min |
| Operating medium | Compressed air in accordance with ISO8573-1:2010 [7:4:4] Inert gases |
| Note on operating and pilot medium | Lubricated operation possible (subsequently required for further operation) |
| Corrosion resistance classification CRC | 2 - Moderate corrosion stress |
| Materials note | Free of copper and PTFE Conforms to RoHS |
| Medium temperature | -10 ... 60 °C |
| Ambient temperature | -10 ... 60 °C |
| Food-safe | See Supplementary material information |
| Mounting type | Line installation with accessories Optional |
| Assembly position | Any |
| Flow direction | non reversible |
| Product weight | 580 g |
| Pneumatic connection, port 1 | G1/4 |
| Pneumatic connection, port 2 | G1/4 |
| Pneumatic connection, port 3 | G1/2 |
| Material seals | TPE-U(PU) |
| Material housing | Aluminium die cast |