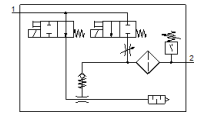
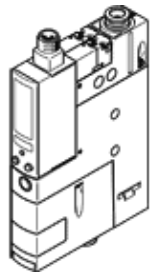


# vacuum generator OVEM-10-H-B-QO-OE-N-2P

Part number: 538827

**FESTO**

Supply/vacuum port with QS fittings, exhaust port with open silencer.



## Data sheet

| Feature                                       | Value   |
|---|---|
| Nominal size, Laval nozzle                    | 0.95 mm   |
| Grid dimension                                | 20 mm   |
| Design, silencer                              | open  |
| Assembly position                             | Any   |
| Ejector characteristic                        | High vacuum<br>Standard   |
| Grade of filtration                           | 40 µm   |
| Manual override                               | Pushing<br>Additionally via operating buttons   |
| Integrated function                           | Ejector pulse valve, electrical<br>Flow control valve<br>Electrical on-off valve<br>Filter<br>Air saving function, electrical<br>Non-return valve<br>Open silencer<br>Vacuum switch |
| Design structure                              | modular   |
| Short circuit strength                        | Yes   |
| Measured variable                             | Relative pressure   |
| Measuring principle                           | Piezoresistive  |
| Switching element function                    | Normally closed contact<br>Normally open contact  |
| Switching function                            | Window comparator<br>Threshold value comparator   |
| Valve function                                | open  |
| Polarity protected                            | for all electrical connections  |
| Standard switching input                      | IEC 61131-2   |
| Type of display                               | 4-place alphanumeric<br>Backlit LCD   |
| Indicating range [bar]                        | -0.999 ... 0 bar  |
| Unit(s) that can be displayed                 | bar   |
| Hysteresis adjustment range [bar]             | -0.9 ... 0 bar  |
| Setting options                               | Via display and buttons   |
| Switching position indicator                  | LCD   |
| Operating status display                      | Optical   |
| Threshold setting range                       | -0.999 ... 0 bar  |
| Operating pressure                            | 2 ... 8 bar   |
| Operating pressure for max. vacuum            | 3.5 bar   |
| Max. vacuum                                   | 93 %  |
| Nominal operating pressure                    | 6 bar   |
| Max. suction rate with respect to atmosphere  | 19.5 l/min  |
| Air supply time at nominal operating pressure | 0.2 s   |
| Operating voltage range DC                    | 20.4 ... 27.6 V   |

| <b>Feature</b>                            | <b>Value</b>   |
|---|--|
| Duty cycle                                | 100 %  |
| Inductive protective circuit              | Adapted to MZ-, MY-, ME coils  |
| Insulation voltage                        | 50 V   |
| Idle current                              | < 70 mA  |
| Max. output current                       | 100 mA   |
| Residual current                          | 0.1 mA   |
| Switch output                             | 2xPNP  |
| Voltage drop                              | ≤ 1.5 V  |
| Characteristic coil data                  | 24 V DC: low-current phase 0.3 W, high-current phase 2.55 W            |
| Surge strength                            | 0.8 kV   |
| Overload withstand capability             | Available  |
| Degree of contamination                   | 3  |
| Authorisation                             | RCM Mark<br>c UL us - Listed (OL)                                      |
| KC mark                                   | KC-EMV   |
| CE mark (see declaration of conformity)   | to EU directive for EMC  |
| Operating medium                          | Compressed air in accordance with ISO8573-1:2010 [7:4:4]               |
| Note on operating and pilot medium        | Lubricated operation not possible                                      |
| Corrosion resistance classification CRC   | 2 - Moderate corrosion stress  |
| Medium temperature                        | 0 ... 50 °C  |
| Relative air humidity                     | 5 - 85 %   |
| Noise level at nominal operating pressure | 73 dB(A)   |
| Protection class                          | IP65   |
| Safety class                              | III  |
| Ambient temperature                       | 0 ... 50 °C  |
| Max. tightening torque                    | 0.8 Nm with female thread<br>2.5 Nm with clearance hole                |
| Product weight                            | 330 g  |
| Pressure measuring range                  | -1 ... 0 bar   |
| Accuracy, FS                              | 3 %FS  |
| Switching point reproducibility, FS       | 0.6 %  |
| Input circuit logic                       | PNP (positive-switching)   |
| Electrical connection                     | 5-pin<br>M12x1<br>Plug   |
| Mounting type                             | with through hole<br>with internal (female) thread<br>with accessories |
| Pneumatic connection, port 1              | QS-8   |
| Pneumatic connection, port 3              | Integrated silencer  |
| Vacuum connection                         | QS-8   |
| Materials note                            | Contains PWIS substances<br>Conforms to RoHS                           |
| Material seals                            | NBR  |
| Material receiver nozzle                  | POM  |
| Material filter                           | Mesh<br>PA<br>Sintered steel   |
| Material filter housing                   | PA-reinforced  |
| Material housing                          | Aluminium die cast<br>PA-reinforced                                    |
| Material adjusting screw                  | Steel  |
| Material silencer                         | Wrought Aluminium alloy<br>PU foam                                     |
| Material screws                           | Steel  |
| Material screen                           | PA   |
| Material connector housing                | Nickel-plated brass  |
| Material electrical contact               | Brass, gold-plated   |
| Material pins                             | Steel  |
| Material transmitter nozzle               | Wrought Aluminium alloy  |
| Material keypad                           | TPE-U  |

| <b>Feature</b>   | <b>Value</b>        |
|------------------|---------------------|
| Material fitting | Nickel-plated brass |