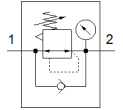
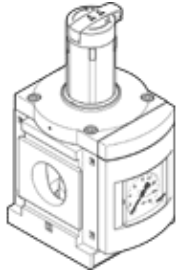


pressure regulator MS12-LR-G-D7-LD-AS

Part number: 537148

FESTO

12 bar maximum output pressure, with pressure gauge, lockable regulator head, direction of flow: from left to right.



Data sheet

Feature	Value
Size	12
Series	MS
Actuator lock	Rotary knob with lock with accessories, lockable
Assembly position	Any
Design structure	Pilot actuated diaphragm regulator
Controller function	Output pressure constant with initial pressure compensation with secondary exhaust with return flow
Pressure gauge	with pressure gauge
Operating pressure	0.8 ... 21 bar
Pressure regulation range	0.5 ... 12 bar
Max. pressure hysteresis	0.4 bar
Flow rate, secondary venting	≤ 600 l/min
Standard nominal flow rate	13,000 ... 22,000 l/min
Operating medium	Compressed air in accordance with ISO8573-1:2010 [7:4:4] Inert gases
Corrosion resistance classification CRC	2 - Moderate corrosion stress
Storage temperature	-10 ... 60 °C
Medium temperature	-10 ... 60 °C
Ambient temperature	-10 ... 60 °C
Product weight	4,000 g
Mounting type	Line installation With mounting bracket Optional
Pneumatic connection, port 1	Sub-base
Pneumatic connection, port 2	Sub-base
Material of cover	PA
Materials note	Conforms to RoHS
Material control panel	PA-reinforced POM
Material underneath cover	Wrought Aluminium alloy
Material seals	NBR
Material spring	Spring steel
Material housing	Aluminium die cast
Material membrane	NBR
Material valve stem	Wrought Aluminium alloy NBR High alloy steel, non-corrosive