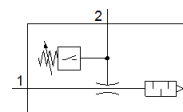
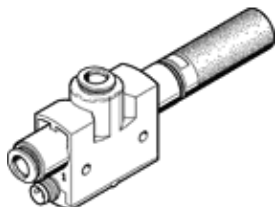


vacuum generator VN-10-L-T4-PQ2-VQ2-O1-P

Part number: 536806

FESTO

With integrated vacuum switch. Standard, high suction rate, width 18 mm, T shape with plug connector and open silencer.



Data sheet

Feature	Value
Nominal size, Laval nozzle	0.95 mm
Grid dimension	16 mm
Design, silencer	open
Assembly position	Any
Ejector characteristic	High suction flow rate Standard
Integrated function	Open silencer Vacuum switch
Design structure	T-shaped
Short circuit strength	Pulsing
Measured variable	Relative pressure
Measuring principle	Piezoresistive
Measurement method	Relative
Switching element function	Normally open contact
Switching function	Threshold value comparator Threshold value with fixed hysteresis
Polarity protected	for all electrical connections
Type of display	LED
Setting options	Teach-In
Operating status display	LED
Threshold setting range	-1 ... 0 bar
Operating pressure for max. suction rate	5 bar
Operating pressure	1 ... 8 bar
Nominal operating pressure	6 bar
Max. suction rate with respect to atmosphere	41.5 l/min
Switch-off time	≤ 4 ms
Switch-on time	≤ 4 ms
Operating voltage range DC	15 ... 30 V
Inductive protective circuit	Adapted to MZ-, MY-, ME coils
Max. output current	100 mA
Residual current	≤ 0.3 mA
Residual ripple	10 %
Switch output	PNP
Voltage drop	≤ 1.5 V
Overload withstand capability	Available
Authorisation	RCM Mark
KC mark	KC-EMV
CE mark (see declaration of conformity)	to EU directive for EMC
Operating medium	Compressed air in accordance with ISO8573-1:2010 [7:4:4]
Note on operating and pilot medium	Lubricated operation not possible
Corrosion resistance classification CRC	1 - Low corrosion stress
Medium temperature	0 ... 60 °C
Recommendation for cleaning	Soap suds

Feature	Value
Noise level at nominal operating pressure	66 dB(A)
Protection class	IP40
Ambient temperature	0 ... 50 °C
Max. tightening torque	0.6 Nm
Pressure measuring range	-1 ... 0 bar
Product weight	36 g
Accuracy, FS	1.5 %FS
Hysteresis FS	2 %FS
Long term drift	±0.5% FS max.
Temperature coefficient, switching point	0.05 %/K
Electrical connection	3-pin M8
Mounting type	with through hole
Pneumatic connection, port 1	QS-6
Pneumatic connection, port 3	Open silencer
Vacuum connection	QS-6
Material seals	NBR
Material receiver nozzle	POM
Material housing	POM-reinforced
Material fibre-optic	PC
Material silencer	PE
Material connector housing	Brass PA Chromium and nickel plated
Material transmitter nozzle	Wrought Aluminium alloy
Material keypad	POM
Material fitting	Brass Nickel plated