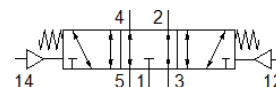
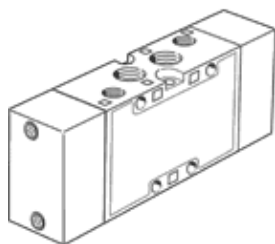


pneumatic valve VL-5/3E-1/4-B-EX

Part number: 536050

FESTO

5/3-way function, centre position exhausted



Data sheet

| Feature | Value |
|---|---|
| Valve function | 5/3 exhausted |
| Type of actuation | pneumatic |
| Width | 32 mm |
| Standard nominal flow rate | 1,600 l/min |
| Operating pressure | -0.9 ... 10 bar |
| Design structure | Piston slide |
| Type of reset | mechanical spring |
| CE mark (see declaration of conformity) | to EU directive explosion protection (ATEX) |
| ATEX category Gas | II 2G |
| ATEX category Dust | II 2D |
| Explosion ignition protection type Gas | Ex h IIC T4 Gb |
| Explosion ignition protection type Dust | Ex h IIIC T130°C Db |
| Explosion-proof ambient temperature | -10°C ≤ Ta ≤ +60°C |
| Nominal size | 10 mm |
| Grid dimension | 33 mm |
| Exhaust-air function | throttleable |
| Sealing principle | soft |
| Assembly position | Any |
| Manual override | None |
| Type of piloting | direct |
| Pilot air supply | external |
| Flow direction | reversible |
| Overlap | Positive overlap |
| Pilot pressure | 3 ... 10 bar |
| b value | 0.38 |
| C value | 6.35 l/sbar |
| Max. switching frequency | 3 Hz |
| Switching time off | 26 ms |
| Switching time on | 6 ms |
| Switching time reversal | 35 ms |
| Operating medium | Compressed air in accordance with ISO8573-1:2010 [7:4:4] |
| Note on operating and pilot medium | Lubricated operation possible (subsequently required for further operation) |
| Corrosion resistance classification CRC | 1 - Low corrosion stress |
| Storage temperature | -40 ... 60 °C |
| Medium temperature | -10 ... 60 °C |
| Pilot medium | Compressed air in accordance with ISO8573-1:2010 [7:4:4] |
| Ambient temperature | -10 ... 60 °C |
| Product weight | 375 g |
| Mounting type | with through hole |
| Pilot air port 12 | G1/8 |
| Pilot air port 14 | G1/8 |
| Pneumatic connection, port 1 | G1/4 |
| Pneumatic connection, port 2 | G1/4 |

| Feature | Value |
|------------------------------|--------------------|
| Pneumatic connection, port 3 | G1/4 |
| Pneumatic connection, port 4 | G1/4 |
| Pneumatic connection, port 5 | G1/4 |
| Materials note | Conforms to RoHS |
| Material seals | NBR |
| Material housing | Aluminium die cast |