

# pneumatic valve

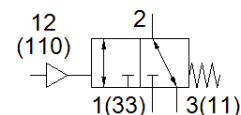
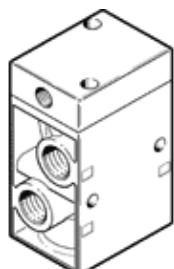
## VL/O-3-1/2-EX

Part number: 536030

FESTO

Depending on the choice of connection, normally-open or normally-closed function.

The valve can be used for vacuum when connected up to provide a normally-closed function (vacuum connected to port P1).



## Data sheet

Feature	Value
Valve function	3/2 open/closed, monostable
Type of actuation	pneumatic
Width	52 mm
Standard nominal flow rate	3,700 l/min
Operating pressure	-0.95 ... 10 bar
Design structure	Poppet seat
Type of reset	mechanical spring
CE mark (see declaration of conformity)	to EU directive explosion protection (ATEX)
ATEX category Gas	II 2G
ATEX category Dust	II 2D
Explosion ignition protection type Gas	Ex h IIC T4 Gb
Explosion ignition protection type Dust	Ex h IIIC T130°C Db
Explosion-proof ambient temperature	-10°C ≤ Ta ≤ +60°C
Nominal size	14 mm
Grid dimension	69 mm
Exhaust-air function	throttleable
Sealing principle	soft
Assembly position	Any
Manual override	None
Type of piloting	direct
Pilot air supply	external
Flow direction	reversible
Overlap	Underlap
Pilot pressure	1 ... 10 bar
b value	0.3
Switching time off	30 ms
Switching time on	17 ms
Operating medium	Compressed air in accordance with ISO8573-1:2010 [7:4:4]
Note on operating and pilot medium	Lubricated operation possible (subsequently required for further operation)
Corrosion resistance classification CRC	1 - Low corrosion stress
Storage temperature	-20 ... 60 °C
Medium temperature	-10 ... 60 °C
Pilot medium	Compressed air in accordance with ISO8573-1:2010 [7:4:4]
Ambient temperature	-10 ... 60 °C
Product weight	860 g
Mounting type	on manifold rail with through hole Optional
Scavenging orifice connection	M5
Pilot air connection: 110	G1/4

Feature	Value
Pilot air port 12	G1/4
Pneumatic connection, port 1	G1/2
Pneumatic connection, 11	G1/2
Pneumatic connection, port 2	G1/2
Pneumatic connection, port 3	G1/2
Pneumatic connection, 33	G1/2
Materials note	Conforms to RoHS
Material seals	NBR
Material housing	Aluminium die cast