

pneumatic valve

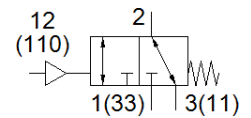
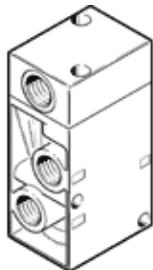
VL/O-3-1/8-B-EX

Part number: 536028

FESTO

Depending on the choice of connection, normally-open or normally-closed function.

The valve can be used for vacuum when connected up to provide a normally-closed function (vacuum connected to port P1).



Data sheet

Feature	Value
Valve function	3/2 open/closed, monostable
Type of actuation	pneumatic
Width	26 mm
Standard nominal flow rate	500 l/min
Operating pressure	-0.95 ... 10 bar
Design structure	Poppet seat
Type of reset	mechanical spring
Protection class	IP65
CE mark (see declaration of conformity)	to EU directive explosion protection (ATEX)
ATEX category Gas	II 2G
ATEX category Dust	II 2D
Explosion ignition protection type Gas	Ex h IIC T4 Gb
Explosion ignition protection type Dust	Ex h IIIC T130°C Db
Explosion-proof ambient temperature	-10°C ≤ Ta ≤ +60°C
Nominal size	5 mm
Grid dimension	27 mm
Exhaust-air function	throttleable
Sealing principle	soft
Assembly position	Any
Type of piloting	direct
Pilot air supply	external
Flow direction	reversible
Overlap	Underlap
Pilot pressure	1 ... 10 bar
Max. switching frequency	12 Hz
Switching time off	10 ms
Switching time on	4 ms
Max. positive test pulse with logic 0	2,200 µs
Max. negative test pulse with logic 1	3,700 µs
Operating medium	Compressed air in accordance with ISO8573-1:2010 [7:4:4]
Note on operating and pilot medium	Lubricated operation possible (subsequently required for further operation)
Corrosion resistance classification CRC	1 - Low corrosion stress
Storage temperature	-20 ... 60 °C
Medium temperature	-10 ... 60 °C
Pilot medium	Compressed air in accordance with ISO8573-1:2010 [7:4:4]
Ambient temperature	-10 ... 60 °C
Product weight	150 g
Mounting type	On PR manifold with through hole Optional

Feature	Value
Scavenging orifice connection	M5
Pilot air connection: 110	G1/8
Pneumatic connection, port 1	G1/8
Pneumatic connection, 11	G1/8
Pneumatic connection, port 2	G1/8
Pneumatic connection, port 3	G1/8
Pneumatic connection, 33	G1/8
Materials note	Conforms to RoHS
Material seals	NBR
Material housing	Aluminium die cast