

# filter regulator

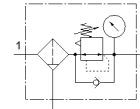
## MS4-LFR-1/4-D7-EUM-AS

Part number: 535724

★ Core product range

12 bar maximum output pressure, 40 µm filter, with pressure gauge, lockable regulator head, metal bowl, manual condensate drain, direction of flow: from left to right.

FESTO



### Data sheet

| Feature                                 | Value  |
|---|--|
| Size                                    | 4  |
| Series                                  | MS   |
| Actuator lock                           | Rotary knob with lock with accessories, lockable                           |
| Assembly position                       | Vertical +/- 5°  |
| Grade of filtration                     | 40 µm  |
| Condensate drain                        | manual rotary  |
| Design structure                        | Filter regulator with pressure gauge                                       |
| Max. condensate volume                  | 25 ml  |
| Controller function                     | Output pressure constant with secondary exhaust with return flow           |
| Bowl guard                              | integrated as metal shell  |
| Pressure gauge                          | with pressure gauge  |
| Operating pressure                      | 0.8 ... 14 bar   |
| Pressure regulation range               | 0.5 ... 12 bar   |
| Max. pressure hysteresis                | 0.25 bar   |
| Standard nominal flow rate              | 1,500 l/min  |
| Operating medium                        | Compressed air to ISO 8573-1:2010 [-:4:-]<br>Inert gases                   |
| Corrosion resistance classification CRC | 2 - Moderate corrosion stress  |
| Storage temperature                     | -10 ... 60 °C  |
| Food-safe                               | See Supplementary material information                                     |
| Air purity class at output              | Compressed air in accordance with ISO8573-1:2010 [7:4:4]                   |
| Medium temperature                      | -10 ... 60 °C  |
| Ambient temperature                     | -10 ... 60 °C  |
| Product weight                          | 475 g  |
| Mounting type                           | Front panel installation<br>Line installation with accessories<br>Optional |
| Pneumatic connection, port 1            | G1/4   |
| Pneumatic connection, port 2            | G1/4   |
| Materials note                          | Conforms to RoHS   |
| Material of connecting plate            | Aluminium die cast   |
| Material control panel                  | PA<br>POM  |
| Material seals                          | NBR  |
| Material filter                         | PE   |
| Material housing                        | Aluminium die cast   |
| Material membrane                       | NBR  |
| Material bowl                           | Aluminium die cast<br>Wrought Aluminium alloy                              |
| Material screen                         | PA   |
| Material separating plate               | POM  |