

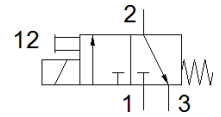
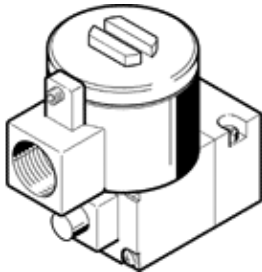
pilot valve

MGXDH-3/2-1.2-110AC-EX

Part number: 535616

FESTO

with CNOMO port pattern, to ISO 15218
This type is suitable for vacuum.



Data sheet

Feature	Value
Valve function	3/2 closed, monostable
Type of actuation	electrical
Operating pressure	-0.9 ... 8 bar
Design structure	On/off valve
Type of reset	mechanical spring
CE mark (see declaration of conformity)	to EU directive explosion protection (ATEX) to EU directive low-voltage devices
Explosion protection certification outside the EU	EPL Db (IEC-EX) EPL Db (KR) EPL Db (RU) EPL Dc (IEC-EX) EPL Dc (KR) EPL Dc (RU) EPL Gb (IEC-EX) EPL Gb (KR) EPL Gb (RU) EPL Gc (IEC-EX) EPL Gc (KR) EPL Gc (RU)
Certificate issuing department	CML 15 ATEX 1119X IECEX CML 17.0147X
ATEX category Gas	II 2G
ATEX category Dust	II 2D
Explosion ignition protection type Gas	Ex db IIC T4 Gb
Explosion ignition protection type Dust	Ex tb IIIC T135°C Db
Explosion-proof ambient temperature	-65°C ≤ Ta ≤ +40°C
Protection class	IP66
Manual override	detenting
Flow direction	non reversible
Duty cycle	100 %
Insulation class	H
Characteristic coil data	110 V AC: 50/60 Hz, pick-up power 7.7 VA, holding power 3.8 VA
Permissible frequency fluctuation	+/- 10 %
Operating medium	Compressed air in accordance with ISO8573-1:2010 [7:4:4]
Note on operating and pilot medium	Lubricated operation possible (subsequently required for further operation)
Corrosion resistance classification CRC	2 - Moderate corrosion stress
Mounting type	CNOMO
Materials note	Contains PWIS substances Conforms to RoHS