

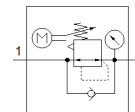
# electrical pressure regulator

## MS6-LRE-1/4-D7

Part number: 535364

FESTO

Indirectly controlled regulators, working pressure up to 12 bar.



## Data sheet

Feature	Value
Size	6
Series	MS
Assembly position	Any Preferably vertical
Design structure	Electrically adjustable pressure regulator
Short circuit strength	for all electrical connections
Controller function	Output pressure constant with initial pressure compensation with secondary exhaust
Pressure gauge	with pressure gauge
Operating pressure	0.8 ... 20 bar
Pressure regulation range	0.5 ... 12 bar
Max. pressure hysteresis	0.25 bar
Standard nominal flow rate	2,700 l/min
Duration of control at 25°C	Max. 90 s
Type of inputs	Per IEC 61131-2 No electrical isolation
Nominal operating voltage DC	24 V
Current consumption at nominal operating voltage	Max. 1 A
Current consumption	Max 3.5 A at 24 V DC
Control duration/ interval ratio	1:3
Permissible voltage fluctuation	+/- 10 %
CE mark (see declaration of conformity)	to EU directive for EMC
Operating medium	Compressed air in accordance with ISO8573-1:2010 [7:4:4] Inert gases
Note on operating and pilot medium	Lubricated operation possible (subsequently required for further operation)
Corrosion resistance classification CRC	2 - Moderate corrosion stress
Storage temperature	-10 ... 50 °C
Food-safe	See Supplementary material information
Medium temperature	0 ... 50 °C
Protection class	IP65
Ambient temperature	0 ... 50 °C
Product weight	1,280 g
Cable interface	Input: M12x1 plug, 5-pin
Mounting type	Line installation with accessories Optional
Pneumatic connection, port 1	G1/4
Pneumatic connection, port 2	G1/4
Material seals	NBR
Material housing	Aluminium die cast
Material membrane	NBR