

solenoid valve

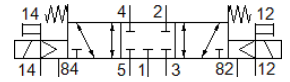
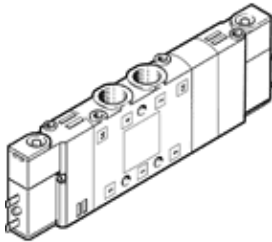
CPE10-M1BH-5/3GS-M7-B

Part number: 533142

FESTO

High component density

This type is suitable for vacuum. Manifold assembly is only possible with 5/2 and 5/3 way valves CPE10/14/18, please do not combine with 3/2 way valves.



Data sheet

Feature	Value
Valve function	5/3 closed
Type of actuation	electrical
Width	10 mm
Standard nominal flow rate	350 l/min
Operating pressure	-0.9 ... 10 bar
Design structure	Piston slide
Type of reset	mechanical spring
Authorisation	c UL us - Recognized (OL)
Maritime classification	see certificate
Protection class	IP65 with plug socket to IEC 60529
Nominal size	4 mm
Exhaust-air function	throttleable
Sealing principle	soft
Assembly position	Any
Manual override	with accessories, detenting Pushing
Type of piloting	Piloted
Pilot air supply	external
Flow direction	reversible
Valve position identification	Inscription label holder
Overlap	Positive overlap
Pilot pressure	3 ... 8 bar
Switching time off	20 ms
Switching time on	16 ms
Duty cycle	100% with holding current reduction
Max. positive test pulse with logic 0	1,200 µs
Max. negative test pulse with logic 1	900 µs
Characteristic coil data	24 V DC: 1.28 W
Permissible voltage fluctuation	-15 % / +10 %
Operating medium	Compressed air in accordance with ISO8573-1:2010 [7:4:4]
Note on operating and pilot medium	Lubricated operation possible (subsequently required for further operation)
Vibration resistance	Transport application test at severity level 2 in accordance with FN 942017-4 and EN 60068-2-6
Shock resistance	Shock test with severity level 2 in accordance with FN 942017-5 and EN 60068-2-27
Corrosion resistance classification CRC	2 - Moderate corrosion stress
Medium temperature	-5 ... 50 °C
Pilot medium	Compressed air in accordance with ISO8573-1:2010 [7:4:4]
Ambient temperature	-5 ... 50 °C

Feature	Value
Product weight	68 g
Electrical connection	2-pin
Mounting type	with through hole
Pilot exhaust port 82	M3
Pilot exhaust port 84	M3
Pilot air port 12	M3
Pilot air port 14	M3
Pneumatic connection, port 1	M7
Pneumatic connection, port 2	M7
Pneumatic connection, port 3	M7
Pneumatic connection, port 4	M7
Pneumatic connection, port 5	M7
Materials note	Conforms to RoHS
Material seals	NBR
Material housing	Aluminium die cast