

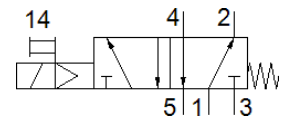
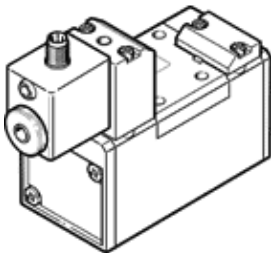
solenoid valve

MDH-5/2-D-2-FR-M12-C

Part number: 533011

FESTO

With M12 plug connection.



Data sheet

Feature	Value
Valve function	5/2 monostable
Type of actuation	electrical
Width	54 mm
Standard nominal flow rate	2,300 l/min
Operating pressure	3 ... 10 bar
Design structure	Piston slide
Type of reset	mechanical spring
Protection class	IP65
Nominal size	11.5 mm
Grid dimension	56 mm
Exhaust-air function	throttleable
Sealing principle	soft
Assembly position	Any
Conforms to standard	ISO 5599-1
Manual override	Pushing
ISO code	252
Type of piloting	Piloted
Pilot air supply	Internal
Flow direction	non reversible
Overlap	Positive overlap
Switching time off	60 ms
Switching time on	25 ms
Duty cycle	100 %
Max. positive test pulse with logic 0	3,800 µs
Max. negative test pulse with logic 1	4,900 µs
Characteristic coil data	24 V DC: 2.7 W
Permissible voltage fluctuation	+/- 10 %
Operating medium	Compressed air in accordance with ISO8573-1:2010 [7:4:4]
Note on operating and pilot medium	Lubricated operation possible (subsequently required for further operation)
Vibration resistance	Transport application test at severity level 1 in accordance with FN 942017-4 and EN 60068-2-6
Shock resistance	Shock test with severity level 2 in accordance with FN 942017-5 and EN 60068-2-27
Medium temperature	-10 ... 50 °C
Sound pressure level	85 dB(A)
Ambient temperature	-10 ... 50 °C
Product weight	810 g
Electrical connection	M12x1
Mounting type	On sub-base With through-hole and screw
Pilot exhaust port 84	M5
Pneumatic connection, port 1	Connection plate size 2 as per ISO 5599-1
Pneumatic connection, port 2	Connection plate size 2 as per ISO 5599-1

Feature	Value
Pneumatic connection, port 3	Connection plate size 2 as per ISO 5599-1
Pneumatic connection, port 4	Connection plate size 2 as per ISO 5599-1
Pneumatic connection, port 5	Connection plate size 2 as per ISO 5599-1
Materials note	Conforms to RoHS
Material seals	HNBR NBR
Material housing	Aluminium die cast