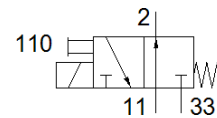
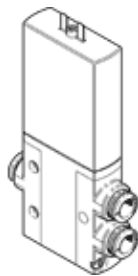


solenoid valve

MHE3-M1H-3/20-QS-6

Part number: 525170

FESTO



Data sheet

Feature	Value
Valve function	3/2 open, monostable
Type of actuation	electrical
Width	14 mm
Standard nominal flow rate	200 l/min
Operating pressure	-0.9 ... 8 bar
Design structure	Pressure-relieved poppet valve
Type of reset	mechanical spring
Protection class	IP65
Authorisation	c UL us - Recognized (OL)
Nominal size	3 mm
Grid dimension	19 mm
Exhaust-air function	throttleable
Sealing principle	soft
Assembly position	Any
Manual override	Pushing
Type of piloting	direct
Flow direction	reversible with restrictions
Overlap	Underlap
Operating pressure, reversible	-0.9 ... 1 bar
Maximum switching frequency	130 Hz
Switching time off	4.5 ms
Switching time on	8.3 ms
Duty cycle	100 %
Characteristic coil data	24 V DC: 3.7 W
Permissible voltage fluctuation	+/- 10 %
Operating medium	Compressed air in accordance with ISO8573-1:2010 [7:4:4]
Note on operating and pilot medium	Lubricated operation possible (subsequently required for further operation)
Vibration resistance	Transport application test at severity level 2 in accordance with FN 942017-4 and EN 60068-2-6
Shock resistance	Shock test with severity level 2 in accordance with FN 942017-5 and EN 60068-2-27
Corrosion resistance classification CRC	2 - Moderate corrosion stress
Medium temperature	-5 ... 60 °C
Ambient temperature	-5 ... 60 °C
Product weight	120 g
Electrical connection	2-pin Plug
Mounting type	with through hole
Pneumatic connection, 11	QS-6
Pneumatic connection, port 2	QS-6
Pneumatic connection, 33	QS-6
Materials note	Free of copper and PTFE Conforms to RoHS
Material seals	HNBR NBR
Material housing	Zinc die-casting coated
Material screws	Steel Galvanised