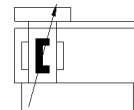


linear drive DLGF-KF-32-600-PPSA

Part number: 5074810

FESTO



Data sheet

Feature	Value
Stroke	600 mm
Piston diameter	32 mm
Cushioning	PPS: Self-adjusting pneumatic end-position cushioning
Assembly position	Any
Guide	Recirculating ball bearing guide
Driver principle	positive-locking (slot)
Position detection	For proximity sensor
Operating pressure	1.5 ... 8 bar
Mode of operation	double-acting
Operating medium	Compressed air in accordance with ISO8573-1:2010 [7:-:-]
Note on operating and pilot medium	Lubricated operation possible (subsequently required for further operation)
Corrosion resistance classification CRC	1 - Low corrosion stress
Ambient temperature	0 ... 60 °C
Cushioning length	11.6 mm
Max. force F _y	1,300 N
Max. force F _z (towards the drive)	1,600 N
Max. force +F _z (away from the drive)	950 N
Max. torque M _x	30 Nm
Max. torque M _y	50 Nm
Max. torque M _z	50 Nm
Theoretical force at 6 bar, return stroke	483 N
Theoretical force at 6 bar, advance stroke	483 N
Moving mass	1,290 g
Product weight	6,986 g
alternative connections	See product drawing
Mounting type	Direct mounting via through-holes with accessories
Pneumatic connection	G1/8
Materials note	Conforms to RoHS Free of copper
Material cover	Die-cast aluminium, coated
Material seals	NBR TPE-U(PU)
Material housing	Anodised aluminium