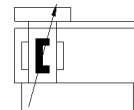


# linear drive DLGF-KF-25-300-PPSA

Part number: 5072374

FESTO



## Data sheet

Feature	Value
Stroke	300 mm
Piston diameter	25 mm
Cushioning	PPS: Self-adjusting pneumatic end-position cushioning
Assembly position	Any
Guide	Recirculating ball bearing guide
Driver principle	positive-locking (slot)
Position detection	For proximity sensor
Operating pressure	1.5 ... 8 bar
Mode of operation	double-acting
Operating medium	Compressed air in accordance with ISO8573-1:2010 [7:-:-]
Note on operating and pilot medium	Lubricated operation possible (subsequently required for further operation)
Corrosion resistance classification CRC	1 - Low corrosion stress
Ambient temperature	0 ... 60 °C
Cushioning length	9 mm
Max. force F <sub>y</sub>	1,000 N
Max. force F <sub>z</sub> (towards the drive)	1,200 N
Max. force +F <sub>z</sub> (away from the drive)	700 N
Max. torque M <sub>x</sub>	12.3 Nm
Max. torque M <sub>y</sub>	30 Nm
Max. torque M <sub>z</sub>	30 Nm
Theoretical force at 6 bar, return stroke	295 N
Theoretical force at 6 bar, advance stroke	295 N
Moving mass	760 g
Product weight	3,000 g
alternative connections	See product drawing
Mounting type	Direct mounting via through-holes with accessories
Pneumatic connection	G1/8
Materials note	Conforms to RoHS Free of copper
Material cover	Die-cast aluminium, coated
Material seals	NBR TPE-U(PU)
Material housing	Anodised aluminium