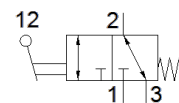
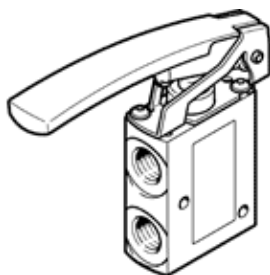


# finger lever valve VHEF-LT-M32-M-G14

Part number: 4500008

**FESTO**



## Data sheet

Feature	Value
Valve function	3/2 open/closed, monostable
Type of actuation	manual
Width	20 mm
Standard nominal flow rate	870 l/min
Operating pressure MPa	-0.095 ... 1 MPa
Operating pressure	-0.95 ... 10 bar
Design structure	Poppet seat
Type of reset	mechanical spring
Nominal size	6 mm
Exhaust-air function	throttleable
Instructions for use	Actuate only manually
Sealing principle	soft
Assembly position	Any
Type of piloting	direct
Flow direction	reversible
Overlap	Zero overlap
Max. switching frequency	0.5 Hz
Operating medium	Compressed air in accordance with ISO8573-1:2010 [7:-:-]
Note on operating and pilot medium	Lubricated operation possible (subsequently required for further operation)
Corrosion resistance classification CRC	1 - Low corrosion stress
Medium temperature	-10 ... 60 °C
Ambient temperature	-10 ... 60 °C
Actuating force	14 N
Product weight	150 g
Mounting type	with through hole
Pneumatic connection, port 1	G1/4
Pneumatic connection, port 2	G1/4
Pneumatic connection, port 3	G1/4
Materials note	Conforms to RoHS
Material seals	NBR
Material housing	Anodised wrought aluminium alloy
Material lever	PA-reinforced