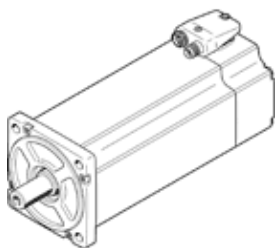


servo motor EMME-AS-100-SK-HS-AMXB

Part number: 4267599

FESTO

Without gear unit/with brake.



Data sheet

Feature	Value
Ambient temperature	-10 ... 40 °C
Storage temperature	-20 ... 70 °C
Relative air humidity	0 - 90 %
Conforms to standard	IEC 60034
Insulation protection class	F
Rating class according to EN 60034-1	S1
Protection class	IP21
Shaft design Featherkey	DIN 6885 A 6 x 6 x 32
Electrical connector system	Plug
Materials note	Contains PWIS substances Conforms to RoHS
Corrosion resistance classification CRC	0 - No corrosion stress
Authorisation	RCM Mark c UL us - Recognized (OL)
CE mark (see declaration of conformity)	to EU directive for EMC to EU directive low-voltage devices
Nominal operating voltage DC	565 V
Nominal voltage DC	565 V
Type of winding switch	Star inside
Number of pole pairs	3
Standstill torque	5.6 Nm
Nominal torque	4.8 Nm
Peak torque	22.4 Nm
Nominal rotary speed	3,000 1/min
Max. speed	3,910 1/min
Nominal motor power	1,500 W
Continuous open-circuit current	3.4 A
Nominal motor current	3 A
Peak current	13.6 A
Motor constant	1.6 Nm/A
Voltage constant, phase-to-phase	102.2 mVmin
Phase-phase winding resistance	4.6 Ohm
Phase-phase winding inductance	15.5 mH
Overall mass moment of inertia at power take-off	5.63 kgcm ²
Product weight	7,250 g
Permissible axial shaft load	130 N
Permissible radial shaft load	650 N
Rotor position sensor	Safety Enc. absolut multi turn
Rotary position encoder interface	HIPERFACE®
Rotary position encoder measuring principle	Optical
Rotary position encoder, sinusoidal/cosinusoidal periods per revolution	128
Rotary position encoder, typical resolution	15 Bit
Rotary position encoder, typical angular accuracy	20 arcmin

Feature	Value
Brake holding torque	9 Nm
Operating voltage DC for brake	24 V
Power consumption, brake	18 W
Mass moment of inertia of brake	0.654 kgcm ²
Switching cycles, holding brake	5 million idle actuations (without work of friction!)
Safety Integrity Level (SIL), component parts	SIL 2, rotor position encoder SILCL 2, rotor position encoder
Performance Level (PL), component parts	Category 3, Performance Level d, rotor position encoder
PFHd, component parts	1.3 x 10E-8, rotor position encoder
Duration of use Tm, component parts	20 years, rotor position encoder
MTTF, subcomponent	1037 years, holding brake
MTTFd, subcomponent	874 years, rotor position encoder