

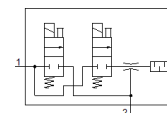
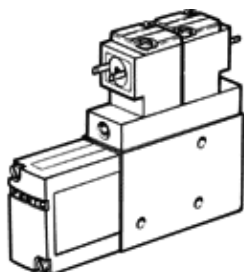
# vacuum generator

## VAD-ME-I-1/4

Part number: 35532  
 Classic - do not use for new projects



With integrated solenoid valve for vacuum On/Off and ejector pulse  
 Unlubricated air is recommended.  
 Modern alternatives can be found by entering the first four characters  
 of the type code in the search field.



### Data sheet

Feature	Value
Nominal size, Laval nozzle	1.4 mm
Assembly position	Any
Ejector characteristic	High vacuum
Integrated function	Ejector pulse valve, electrical Electrical on-off valve
Design structure	T-shaped
Operating pressure	1.5 ... 8 bar
Max. vacuum	90 %
Duty cycle	100 %
Operating medium	Compressed air in accordance with ISO8573-1:2010 [7:4:4]
Note on operating and pilot medium	Lubricated operation not possible
Medium temperature	0 ... 50 °C
Protection class	IP65
Ambient temperature	0 ... 50 °C
Electrical connection	Plug
Mounting type	with internal (female) thread
Pneumatic connection, port 1	G1/8
Vacuum connection	G1/4
Material housing	Aluminium