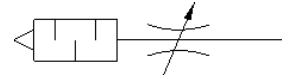


# exhaust air flow control valve GRE-3/8

Part number: 35310

FESTO

With sintered metal silencer.



## Data sheet

Feature	Value
Valve function	Flow control – silencer function
Pneumatic connection, port 1	G3/8
Adjusting element	Slotted head screw
Mounting type	Threaded
Standard nominal flow rate in flow control direction	2,000 l/min
Standard flow rate 6 → 0 bar	3 ... 2,000 l/min
Operating pressure	0 ... 10 bar
Ambient temperature	-10 ... 70 °C
Assembly position	Any
Operating medium	Compressed air in accordance with ISO8573-1:2010 [7:4:4]
Note on operating and pilot medium	Lubricated operation possible (subsequently required for further operation)
Medium temperature	-10 ... 70 °C
Max. tightening torque	15 Nm
Product weight	50 g
Material of threaded plug	Wrought Aluminium alloy
Materials note	Conforms to RoHS
Material seals	NBR
Material adjusting screw	Brass